



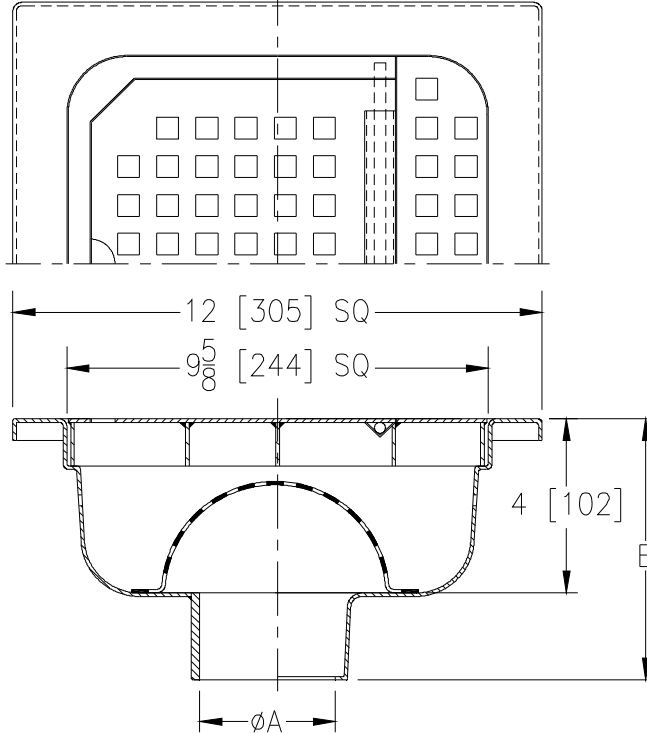
Z1749-19

12 X 12 [305 X 305] SANI-FLOR RECEPTOR
W/ 4 [102] SUMP DEPTH, & FULL HINGED GRATE

SPECIFICATION SHEET

TAG _____

Dimensional Data (inches and [mm]) are Subject to Manufacturing Tolerances and Change Without Notice



A - Pipe Size In. [mm]	Approx. Wt. Lbs. [kg]	Grate Open Area Sq. In. [cm ²]
2, 3, 4 [51, 76, 102]	15 [7]	8 [52]

ENGINEERING SPECIFICATION: ZURNZ1749-19
 12" x 12" x 4" [305mm x 305mm x 102mm] deep, 16 gage, All Type 304 (CF8) Stainless Steel light-duty Sani-Flor receptor with non-tilt, loose set full hinged grate with 1/2" [13mm] square openings and anti-splash interior dome strainer.

OPTIONS (Check/specify appropriate options)

PIPE SIZE

2,3,4 [51,76,102]
2,3,4 [51,76,102]

(Specify size/type) **OUTLET**

___ NH No-Hub
___ NL Neo-Loc

'E' BODY HT. DIM.

6-1/16 [154]
5-13/16 [148]

PREFIXES

___ Z Type 304 (CF8) Stainless Steel Body*
___ ZM Type 316 (CF8M) Stainless Steel

SUFFIXES

___ -DX Dex-o-tex Flange
___ -K Anchor Flange w/ Seepage Holes (may not be used with -P)
___ -KC Anchor Flange w/ Seepage Holes and Clamp Collar (may not be used with -P)
___ -P 1/2 [13] Trap Primer Connection (may not be used with -K or -KC)
___ -TC Neo-Loc Test Cap Gasket (2,3,4 [51,76,102] NL Bottom Outlet Only)
___ -VP Vandal-Proof Secured Top
___ -Y Sediment Bucket

* Regularly furnished unless otherwise specified.