

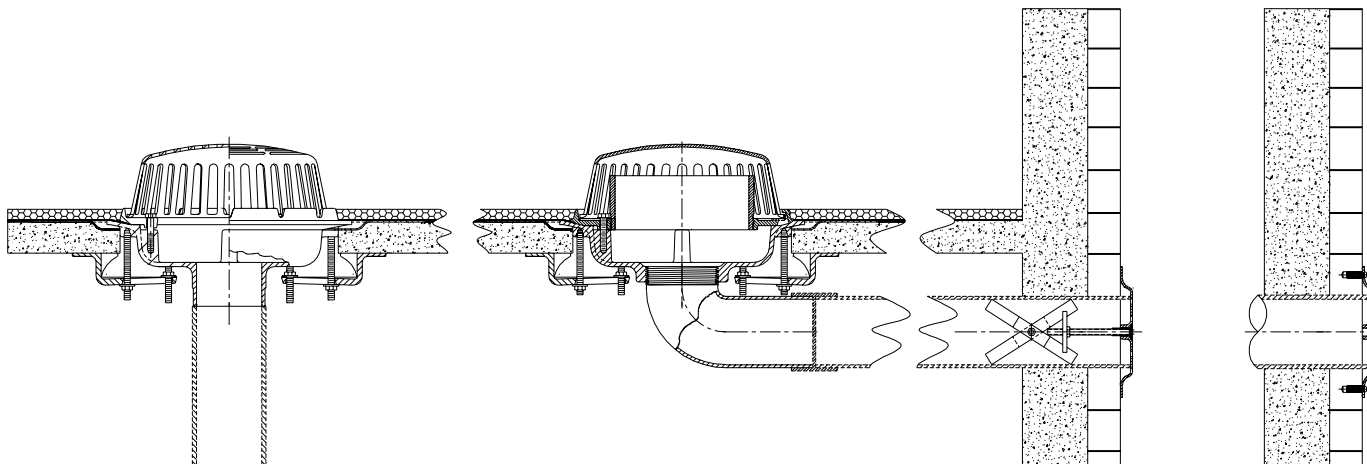


Z-100-156
COMBINATION MAIN ROOF & OVERFLOW
DRAIN (PER BOCA CODE)

SPECIFICATION SHEET

TAG _____

Dimensional Data (inches and [mm]) are Subject to Manufacturing Tolerances and Change Without Notice



NOTE: FOR DRAIN DIMENSIONAL DATA
 SEE Z-100 SUBMITTAL DRAWING

INSTALLATION
 WITH Z-1471

OPTIONAL
 INSTALLATION
 WITH Z-1471-LC

A- Pipe Size In.	Approx. Wt. Lbs. [kg]	Dome Open Area Sq. In. [cm ²]
2-3-4 [50-75-100]	26 [12]	103 [665]
5-6 [125-150]	27 [12]	
8 [200]	28 [13]	

ENGINEERING SPECIFICATION: ZURN Z-100-156 15 [381] Diameter roof drain combination consisting of two Dura-Coated cast iron bodies with bottom outlets, combination membrane flashing clamps/gravel guards, one internal water dam, one elbow adapter, one regular low silhoutte cast iron dome, and one low silhoutte cast iron rainproof dome.

OPTIONS (Check/specify appropriate options)

PIPE SIZE

- 2 thru 6, 8 [50 thru 150,200]
- 2 thru 6, 8 [50 thru 150,200]
- 2 thru 6, 8 [50 thru 150,200]
- 2,3,4 [50,75,100]

(Specify size/type) **OUTLET**

- _____ IC Inside Caulk
- _____ IP Threaded
- _____ NH No-Hub
- _____ NL Neo-Loc

E BODY HT. DIM.

- 5 1/4 [133]
- 3 3/4 [95]
- 5 1/4 [133]
- 4 5/8 [117]

PREFIXES

- _____ ZC- D.C.C.I. Body with Cast Iron Dome*

SUFFIXES

- | | |
|---|---|
| _____ -AC Angular Underdeck Clamp | _____ -W2 2 [51] Internal Water Dam (Overflow Only) |
| _____ -AR Acid Resistant Epoxy Coated Finish | _____ -W3 3 [76] Internal Water Dam (Overflow Only) |
| _____ -BS Bronze Mesh Screen Over Dome | _____ -W4 4 [102] Internal Water Dam (Overflow Only) |
| _____ -E Static Extension 1 [25] thru 4 [102] (Specify Ht.) | _____ -XJ Vertical Expansion Joint (See Z-190) |
| _____ -EA Adjustable Extension Assembly
1 3/4 [44] thru 3 1/2 [89] | _____ -6 6 3/4 [171] High Aluminum Dome
(148 Sq. In. [955 cm ²] Open Area) |
| _____ -ES Static Extension With Secondary Clamp | _____ -84 Stainless Steel Perforated Gravel Guard |
| _____ -G Galvanized Cast Iron | _____ -90 90° Threaded Side Outlet Body |
| _____ -GD Galvanized Cast Iron Dome | |
| _____ -OD Overflow Drain Only | |
| _____ -R Roof Sump Receiver | |
| _____ -SC Secondary Clamping Collar | |
| _____ -SS Stainless Steel Mesh Screen Over Dome | |
| _____ -VP Vandal Proof Secured Top | |

*REGULARLY FURNISHED UNLESS OTHERWISE SPECIFIED

REV. A	DATE: 8/5/02	C.N. NO. 89739
DWG. NO. P-14771 PRODUCT NO. Z-100-156		