

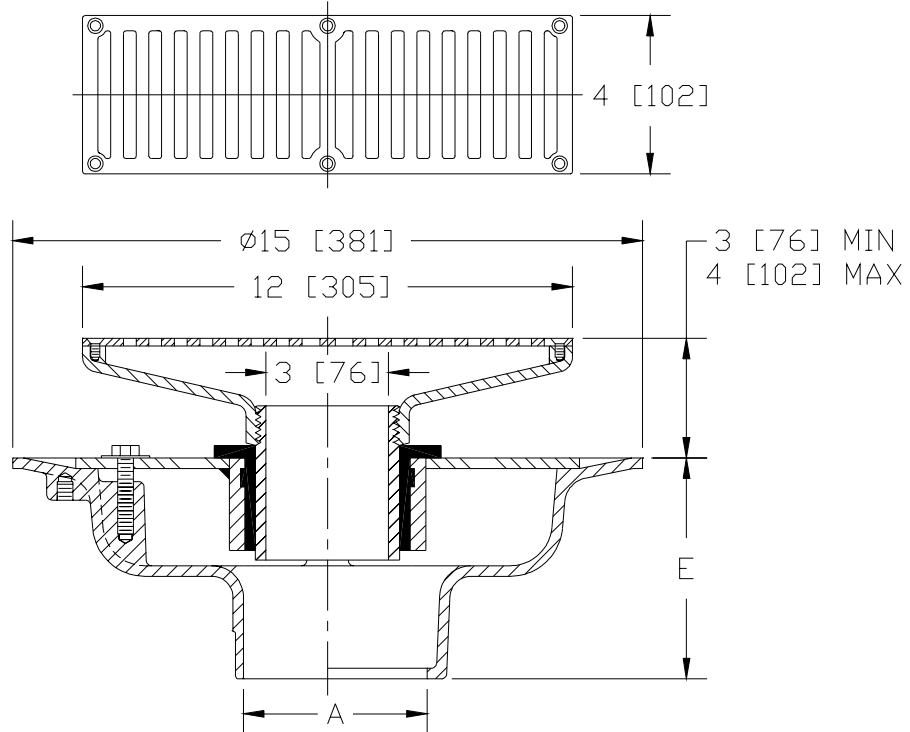


Z-624-82 ISOLATION DECK DRAIN

SPECIFICATION SHEET

TAG _____

Dimensional Data (inches and [mm]) are Subject to Manufacturing Tolerances and Change Without Notice



A- Pipe Size In.	Approx. Wt. Lbs. [kg]	Grate Open Area Sq. In. [cm ²]
2-3-4 [50-75-100]	42 [19]	18 [116]
5-6 [125-150]		

ENGINEERING SPECIFICATION: ZURN Z-624-82 Floating slab drain, Dura-Coated cast iron lower body, clamp collar, neoprene flex gasket and isolation nipple. Rectangular top gutter drain, Dura-Coated cast iron upper body with polished secured nickel bronze grate.

OPTIONS (Check/specify appropriate options)

PIPE SIZE

- 2 thru 6 [50 thru 150]
- 2 thru 4, 6 [50 thru 100, 150]
- 2 thru 6 [50 thru 150]
- 2 thru 6 [50 thru 150]
- 2 thru 4 [50 thru 100]

(Specify size/type) **OUTLET**

- ___ IC Inside Caulk
- ___ IG Inside Caulk w/Sealtrol Gskt.
- ___ IP Threaded
- ___ NH No-Hub
- ___ NL Neo-Loc

'E' BODY HT. DIM.

- 5 1/4 [133]
- 5 1/4 [133]
- 3 3/4 [95]
- 5 1/4 [133]
- 4 5/8 [117]

PREFIXES

- ___ ZB- D.C.C.I Upper and Lower Bodies w/Polished Bronze Grate.
- ___ ZN- D.C.C.I Upper and Lower Bodies w/Polished Nickel Bronze Grate.

SUFFIXES

- ___ -C Underdeck Clamp
- ___ -DX Dex-o-tex Flange
- ___ -G Galvanized Cast Iron
- ___ -R Sump Receiver
- ___ -SD Longer Standpipe (Specify Height Required)
- ___ -VP Vandal Proof Secured Top

*REGULARLY FURNISHED UNLESS OTHERWISE SPECIFIED

REV.	DATE: 8/28/02	C.N. NO. 89783
DWG. NO. P-14922 PRODUCT NO. Z-624-82		