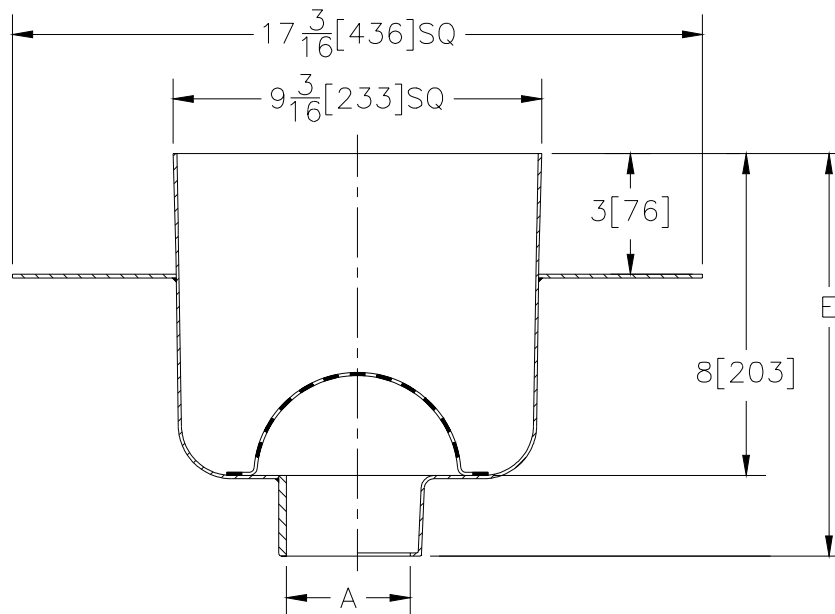




Z-1751-107
9 3/16" X 9 3/16" [233 X 233] SANI-FLOR RECEPTOR
8" [203] SUMP DEPTH

TAG _____

Dimensional Data (inches and [mm]) are Subject to Manufacturing Tolerances and Change Without Notice



A- Pipe Size In.	Approx. Wt. Lbs. [kg]
2-3-4 [50-75-100]	19 [9]

ENGINEERING SPECIFICATION: ZURN Z-1751-107

9 3/16 x 9 3/16 x 8 [233 x 233 x 203] deep, 14 gage, All Type 304 (CF8) Stainless Steel light duty Sani-Flor receptor with anti-splash interior dome strainer and Dex-o-tex flange.

OPTIONS (Check/specify appropriate options)

PIPE SIZE

- 2 thru 4 [50 thru 100]
- 2 [50]
- 3 [75]
- 4 [100]
- 2 thru 4 [50 thru 100]
- 2 thru 4 [50 thru 100]

(Specify size/type) **OUTLET**

- _____ IC Inside Caulk
- _____ IP Threaded
- _____ IP Threaded
- _____ IP Threaded
- _____ NH No-Hub
- _____ NL Neo-Loc

'E' BODY HT. DIM.

- 10 9/16 [268]
- 9 5/16 [237]
- 9 9/16 [243]
- 10 1/16 [256]
- 10 1/16 [256]
- 9 13/16 [249]

PREFIXES

- _____ Z- Type 304 (CF8) Stainless Steel Body*
- _____ ZM- Type 316 (CF8M) Stainless Steel

SUFFIXES

- _____ -IP Female Threaded Outlet
- _____ -P 1/2 Trap Primer Connection
- _____ -Y Sediment Bucket

REV.	DATE: 9/5/97	C.N. NO. 78465
DWG. NO. P-14516 PRODUCT NO. Z-1751-107		

*REGULARLY FURNISHED UNLESS OTHERWISE SPECIFIED