



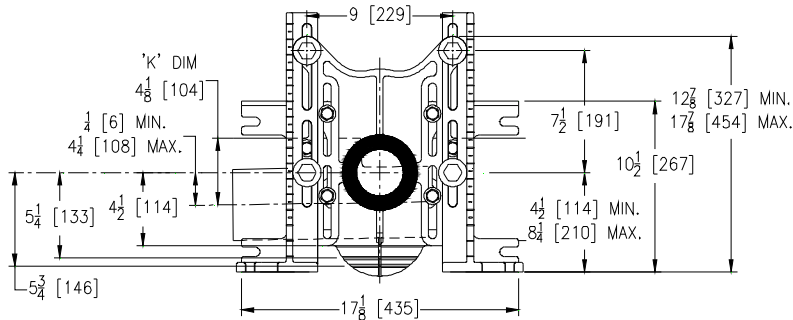
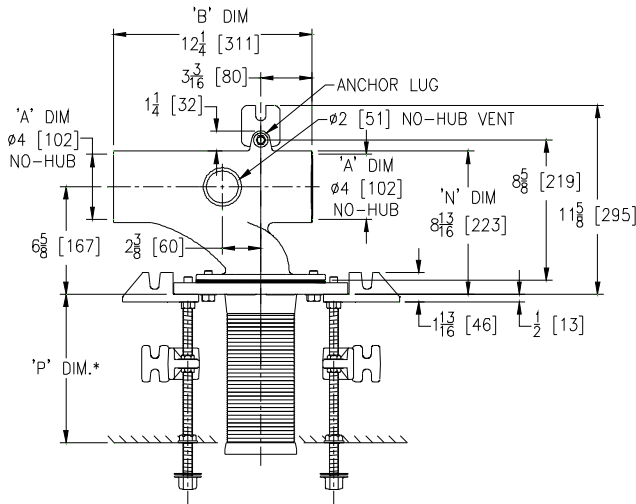
Z1201-N_4-M

EZCARRY™ ADJUSTABLE HORIZONTAL HIGH PERFORMANCE SIPHON JET NO-HUB WATER CLOSET CARRIER SYSTEM W/ AUXILIARY FOOT SUPPORT

SPECIFICATION SHEET

TAG _____

Dimensional Data (inches and [mm]) are Subject to Manufacturing Tolerances and Change Without Notice



Product Number	Approx. Wt. lbs [kg]
Z1201-NL4-M	65[29.5]
Z1201-NR4-M	

Note:

- *1. 'P' Dim for auxiliary support = 10 thru 18 [254 thru 457]
2. Feet bolted to floor using min. 1/2 [13] dia. anchors.
3. Rear anchor foot required for secure installation.
4. -CL option must be specified to receive coupling longer than 6 [152].

Z1201-NR4-M Illustrated

ENGINEERING SPECIFICATION: ZURN Z1201-N_4-M

EZCarry™ horizontal siphon jet water closet carrier system with high performance waterway and 4" [102mm] no-hub connections. System includes Dura-Coated cast iron main fitting with hydro-mechanically optimized sweep and extended 2" [51mm] vent, adjustable gasketed faceplate, universal floor mounted pre-fab slotted foot supports, auxiliary foot supports, heavy-duty 1/2" [13mm] rear anchor tie down, fixture bolts, trim, stud protectors, bonded "Neo-Seal" gasket, and corrosion resistant, adjustable 3" [76mm] dia. X 6" [152mm] coupling with integral test cap designed to increase flow velocity and line carry. EZCarry system complies with the requirements of ASME A112.6.1M up to a 500 lbs [227 kg] static load rating.

OPTIONS (Check/specify appropriate options)

- ____ Z1201-NL4-M 4 [102] No-Hub Left Hand Inlet with Flow to Right
____ Z1201-NR4-M 4 [102] No-Hub Right Hand Inlet with Flow to Left

PREFIXES

- ____ Z D.C.C.I. System with Zurn ZZ Adjustable Coupling*
____ ZQ D.C.C.I. System with NPT Faceplate, Non-Adjustable Coupling

SUFFIXES

- | | | | |
|----------|---|-------------|--|
| ____ -A | Auxiliary Support Assembly (For 'P' Dim. Greater than 18 [457]) | ____ -G | Galvanized Cast Iron |
| ____ -CC | Corrosion Resistant Cast Iron Coupling (2-1/4 [57] to 12 [305]) | ____ -JC | 2 [51] Auxiliary Inlet with 1/8 Bend |
| ____ -CE | EZ-Set™ Coupling (Available 6 [152], 12 [305] or longer when specified. Minimum length=5 [127]) | ____ -RYK | Unistrut Pre-Fab Foot Support |
| ____ -CL | Custom Length Standard Coupling with Integral Test Cap (Specify Length 4, 8, 10, 12 [102, 203, 254, 305]) | ____ -RYK17 | One Piece Unistrut Pre-Fab Foot |
| | | ____ -VP | Vandal-Proof Trim |
| | | ____ -45 | Finishing Frame for Siphon Jet System |
| | | ____ -50 | Flush Valve Supply Support for Water Closets |

* Regularly furnished unless otherwise specified.