



Z100-262

15 [381] DIA. MAIN ROOF DRAIN W/ S.S.
PERFORATED PLATE & 6 [152] NO-HUB ADAPTER,
NO-HUB STANDPIPE & Z150 PROM-DECK DRAIN

SPECIFICATION SHEET

TAG _____

Dimensional Data (inches and [mm]) are Subject to Manufacturing Tolerances and Changes Without Notice

A- Pipe Size In.	Approx. Wt. Lbs. [kg]	Grate Open Area Sq. In. [cm ²]
2-3-4 [51-76-102]	66 [30]	44 [284]
5-6 [127-152]	67 [30]	
8 [203]	68 [31]	
10 [254]	70 [32]	

ENGINEERING SPECIFICATION: ZURN Z100-262

15 diameter roof drain. Dura-Coated cast iron body with stainless steel perforated plate with 6 [152] no-hub adapter and no-hub standpipe. 14 [356] square top Prom-Deck drain. Dura-Coated cast iron body with rotatable square promenade frame with seepage openings, frame clamps and heavy-duty heel-proof grate.

OPTIONS (Check/specify appropriate options)

PIPE SIZE

- 2 thru 6,8 [51 thru 152,203]
- 2 thru 6,8 [51 thru 152,203]
- 2 thru 6,8,10 [51 thru 152,203,254]
- 2,3,4 [51,76,102]

(Specify size/type) OUTLET

- ___ IC Inside Caulk
- ___ IP Threaded
- ___ NH No-Hub
- ___ NL Neo-Loc

E BODY HT. DIM.

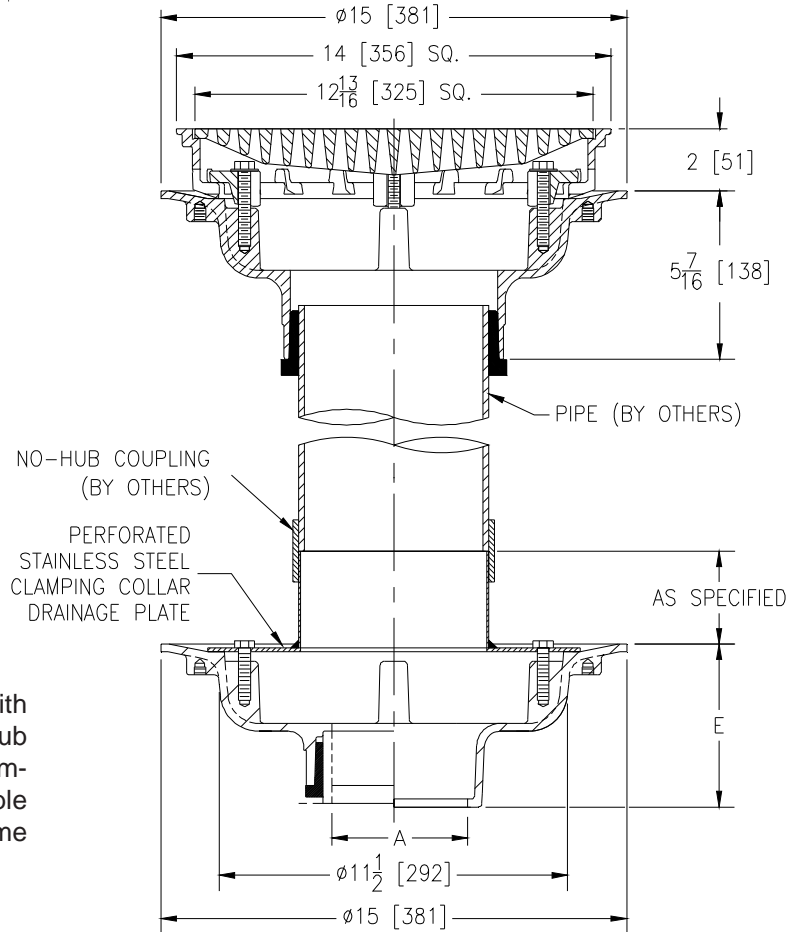
- 5-1/4 [133]
- 3-3/4 [95]
- 5-1/4 [133]
- 4-5/8 [117]

PREFIXES

- ___ Z D.C.C.I. Body with Top*
- ___ ZB D.C.C.I. Body with Polished Bronze Top (Add 3/16 [5] to 2 [51] Dim & 3/8 [10] to 14 [356] Dim.)
- ___ ZN D.C.C.I. Body with Polished Nickel Bronze Top (Add 3/16 [5] to 2 [51] Dim. & 3/8 [10] to 14 [356] Dim.)

SUFFIXES

- ___ -AC Angular Underdeck Clamp
- ___ -C Underdeck Clamp
- ___ -DP Top-Set[®] Roof Deck Plate (Replaces both the -C and -R)
- ___ -DR Top-Set[®] Drain Riser (Adjustment from 3-5/8 [92] to 7-1/4 [184])
- ___ -DT Decorative Polished Top (ZB and ZN Only)
- ___ -DX Dex-o-tex Flange (ZB and ZN Only)
- ___ -G Galvanized Cast Iron
- ___ -HF High Flow Ductile Iron Grate (Open Area = 61 in² [394 cm²])
- ___ -R Roof Sump Receiver
- ___ -TC Neo-Loc Test Cap Gasket (2 [51] - 4 [102] NL Bottom Outlet Only)
- ___ -TS Top Secured with Slotted Screws
- ___ -VP Vandal-Proof Secured Top
- ___ -XJ Vertical Expansion Joint (See Z190)
- ___ -Y Sediment Bucket
- ___ -85 Stainless Steel Perforated Extension
- ___ -90 90° Threaded Side Outlet Body (Lower body) (2 [51] thru 6 [152])



*REGULARLY FURNISHED UNLESS OTHERWISE SPECIFIED

REV.	DATE: 04/08/13	C.N. NO. 129101
		PRODUCT NO. Z100-262