



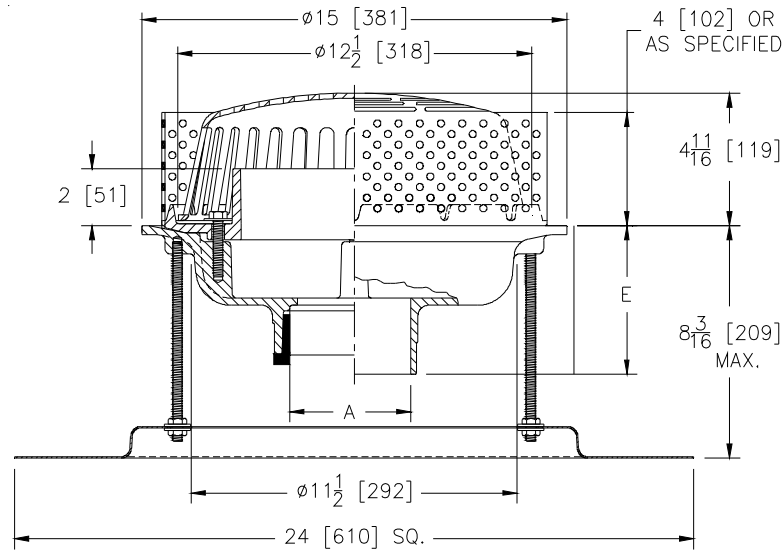
Z100-280

15 [381] DIAMETER MAIN ROOF DRAIN W/TOP-SET
ADJUSTABLE EXTENSION, PERFORATED GRAVEL GUARD,
& 2 [51] HIGH INTERNAL WATER DAM

SPECIFICATION SHEET

TAG _____

Dimensional Data (inches and [mm]) are Subject to Manufacturing Tolerances and Change Without Notice



ENGINEERING SPECIFICATION: ZURN Z100-280

15 [381] Diameter roof drain. Dura-Coated cast iron body with top-set adjustable extension assembly, combination membrane flashing clamp/gravel guard, 2 [51] high internal water dam, perforated gravel guard, and vandal proof secured low silhouette Poly-Dome.

A Pipe Size In.	Approx. Wt. Lbs. [kg]	Dome Open Area Sq. In. [cm ²]
2-3-4 [51-76-102]	38 [17]	103 [665]
5-6 [127-152]	39 [18]	
8-10 [203-254]	40 [18]	

OPTIONS (Check/specify appropriate options)

PIPE SIZE

- 2-3-4-5-6-8 [51-76-102-127-152-203]
- 2-3-4-5-6-8 [51-76-102-127-152-203]
- 2-3-4-5-6-8-10 [51-76-102-127-152-203-254]
- 2-3-4 [51,76-102]
- 6 [152]

(Specify size/type) OUTLET

- _____ IC Inside Caulk
- _____ IP Threaded
- _____ NH No-Hub
- _____ NL Neo-Loc
- _____ NL Neo-Loc

E BODY HT. DIM.

- 5-1/4 [133]
- 3-3/4 [95]
- 5-1/4 [133]
- 4-9/16 [116]
- 5-7/16 [112]

PREFIXES

- _____ Z D.C.C.I. Body with Poly-Dome*
- _____ ZA D.C.C.I. Body with Aluminum Dome
- _____ ZC D.C.C.I. Body with Cast Iron Dome
- _____ ZRB D.C.C.I. Body with Plain Bronze Dome

SUFFIXES

- _____ -AR Acid Resistant Epoxy Coated
- _____ -DX Dex-o-tex Flange
- _____ -E Static Extension 1 [25] thru 4 [102] (Specify Ht.)
- _____ -EA Adjustable Extension Assembly (2-1/8 [54] thru 3-1/2 [89])
- _____ -G Galvanized Cast Iron
- _____ -GD Galvanized Cast Iron Dome (ZC Only)
- _____ -HD 6-3/4 [171] High Aluminum Dome Strainer (148 Sq. In. [955 cm²] Open Area) (ZA Only)
- _____ -SC Secondary Clamp Collar
- _____ -SS Stainless Steel Mesh Screen Over Dome
- _____ -ST Dome with Solid Top (ZA, ZC & ZRB Only)
- _____ -TC Neo-Loc Test Cap Gasket (2-4 [51-102] NL Bottom Outlet Only)
- _____ -85 Stainless Steel Perforated Extension

* Regularly furnished unless otherwise specified.