



Z610-H-ADJ-90

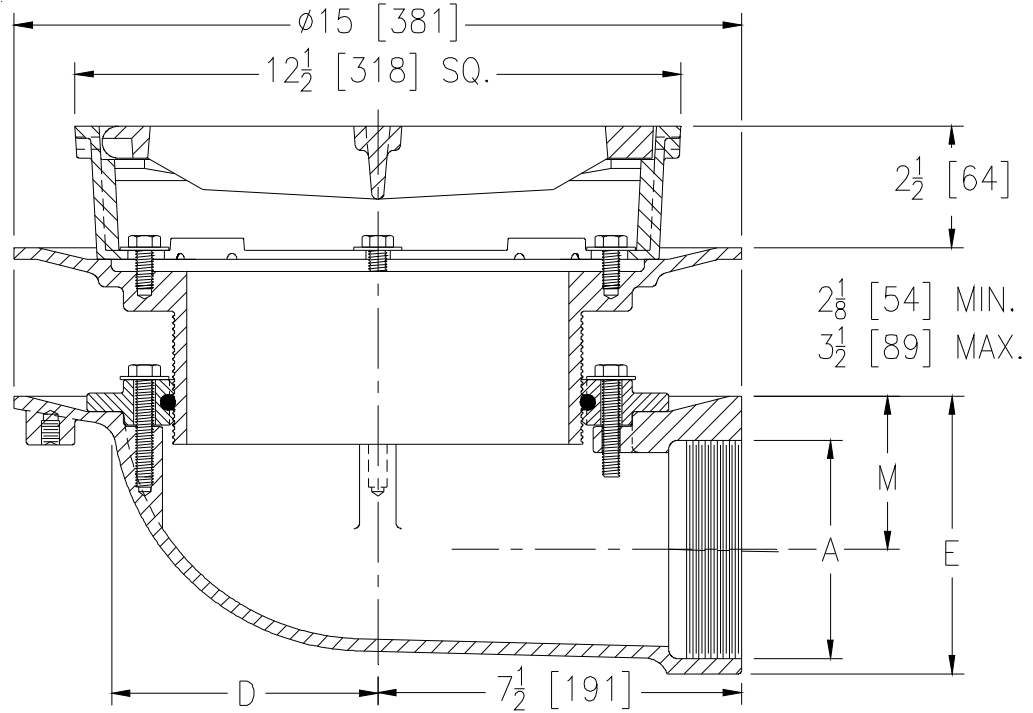
12 [305] HEAVY-DUTY ADJUSTABLE DRAIN WITH SIDE OUTLET

SPECIFICATION SHEET

TAG _____



Dimensional Data (inches and [mm]) are Subject to Manufacturing Tolerances and Change Without Notice



A Pipe Size In. [mm]	D	M	Approx. Wt. Lbs. [kg.]	Grate Open Area Sq. In. [cm ²]
2-3-4 [51-76-102]	5-1/2 [127]	4-1/4 [108]	72 [33]	40 [258]
		3-11/16 [94]		
		3-3/16 [81]		
5-6 [127-152]	5-7/8 [149]	4-13/16 [122]		
		4-1/4 [108]		

ENGINEERING SPEC. : ZURN Z610-H-ADJ-90
12 [305] square top adjustable floor drain, Dura-Coated cast iron body with side outlet, clamping collar, adjustable leveling frame, and heavy-duty grate.

OPTIONS (Check/specify appropriate options)

PIPE SIZE

2 thru 6 [51 thru 152]
2 thru 6 [51 thru 152]

(Specify size/type) **OUTLET**

____ IP Threaded
____ NH No-Hub (IP W/ Z1040)

'E' BODY HT. DIM.

5-3/4 [146]
7-7/8 [200]

PREFIXES

- ____ Z D.C.C.I. Body and Top*
- ____ ZB D.C.C.I Body w/ Polished Bronze Top (Add 3/16 [5] to 2 1/2 [64] Dim. and 11/16 [17] to 12 1/2 [318] Dim.)
- ____ ZN D.C.C.I Body w/ Polished Nickel Bronze Top (Add 3/16 [5] to 2 1/2 [64] Dim. and 11/16 [17] to 12 1/2 [318] Dim.)
- ____ ZS D.C.C.I Body w/ Polished Stainless Steel Top (Add 3/16 [5] to 2 1/2 [64] Dim. and 11/16 [17] to 12 1/2 [318] Dim.)

SUFFIXES

- ____ -AR Acid-Resisting Epoxy Coated Cast Iron
- ____ -DG Duresist Grate
- ____ -GB Galvanized Cast Iron Body Only
- ____ -HL Hinged Locking Grate
- ____ -OLF Overlay Frame (ZS Only)
- ____ -P 1/2 [13] Trap Primer Connection
- ____ -VP Vandal-Proof Secured Top
- ____ -Y Sediment Bucket

*REGULARLY FURNISHED UNLESS OTHERWISE SPECIFIED

REV.	DATE: 07/10/12	C.N. NO. 124537
DWG. NO. 310072 PRODUCT NO. Z610-H-ADJ-90		