

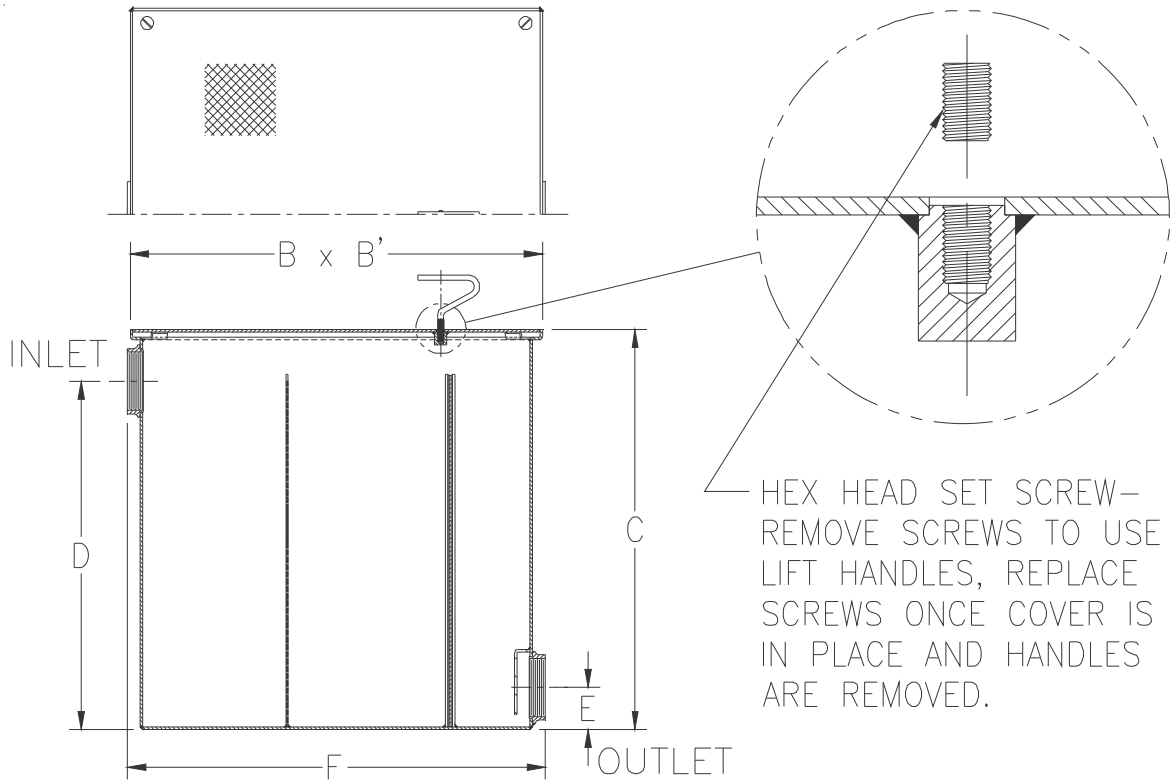


ZS1185 STAINLESS STEEL LINT INTERCEPTOR

SPECIFICATION SHEET

TAG _____

Dimensional Data (inches and [mm]) are Subject to Manufacturing Tolerances and Change Without Notice



Size No. of Machines	Inlet/Outlet Size**	Flow Rate G.P.M. [L]	Approx. Wt. Lbs. [kg]	Dimensions In Inches					
				B	B'	C	D	E	F
3	2 [51]	30 [113]	93 [42]	17 [432]	17 [432]	16 1/2 [419]	13 1/2 [343]	3 1/4 [82]	17 1/4 [438]
7	3 [76]	70 [265]	155 [70]	25 [635]	25 [635]	20 [508]	17 [432]	3 1/4 [82]	25 1/2 [648]
10	4 [102]	100 [378]	271 [123]	33 [838]	33 [838]	28 [711]	25 [635]	4 [102]	34 [864]
20	4 [102]	200 [756]	404 [183]	40 [1016]	40 [1016]	35 [889]	32 [813]	4 [102]	41 [1041]
30	6 [152]	300 [1134]	654 [297]	45 [1143]	45 [1143]	40 [1016]	36 [914]	5 [127]	46 [1168]
40	6 [152]	400 [1512]	723 [328]	48 [1219]	48 [1219]	43 [1092]	39 [991]	5 [127]	49 [1245]
50	6 [152]	500 [1890]	911 [414]	52 [1321]	52 [1321]	47 [1194]	43 [1092]	5 [127]	53 [1346]

ENGINEERING SPECIFICATION: ZURN ZS1185 All type 304 fabricated stainless steel lint interceptor, non-skid secured cover with removable lift handle, stainless lint intercepting secondary screen assembly and permanent primary straining baffle. Regularly furnished with high inlet and low outlet. Note: Size #3 and #7 covers are not furnished with a lift handle.

OPTIONS (Check/specify appropriate options)

PREFIXES

_____ ZS All Type 304 Fabricated Stainless Steel

SUFFIXES

- _____ -E Acid Resistant Coated interior and exterior fabricated steel extension section (Specify 'C' dimension required for recessed installation).
- _____ -RS Stainless Steel Screen Replacement Assembly

*REGULARLY FURNISHED UNLESS OTHERWISE SPECIFIED

REV.	DATE: 04/26/10	C.N. NO. 111054
DWG. NO. 84623	PRODUCT NO. ZS1185	

ZURN INDUSTRIES, LLC. ♦ SPECIFICATION DRAINAGE OPERATION ♦ 1801 Pittsburgh Ave. ♦ Erie, PA 16514

Phone: 814/455-0921 ♦ Fax: 814/454-7929 ♦ World Wide Web: www.zurn.com

In Canada: ZURN INDUSTRIES LIMITED ♦ 3544 Nashua Drive ♦ Mississauga, Ontario L4V1L2 ♦ Phone: 905/405-8272 Fax: 905/405-1292