



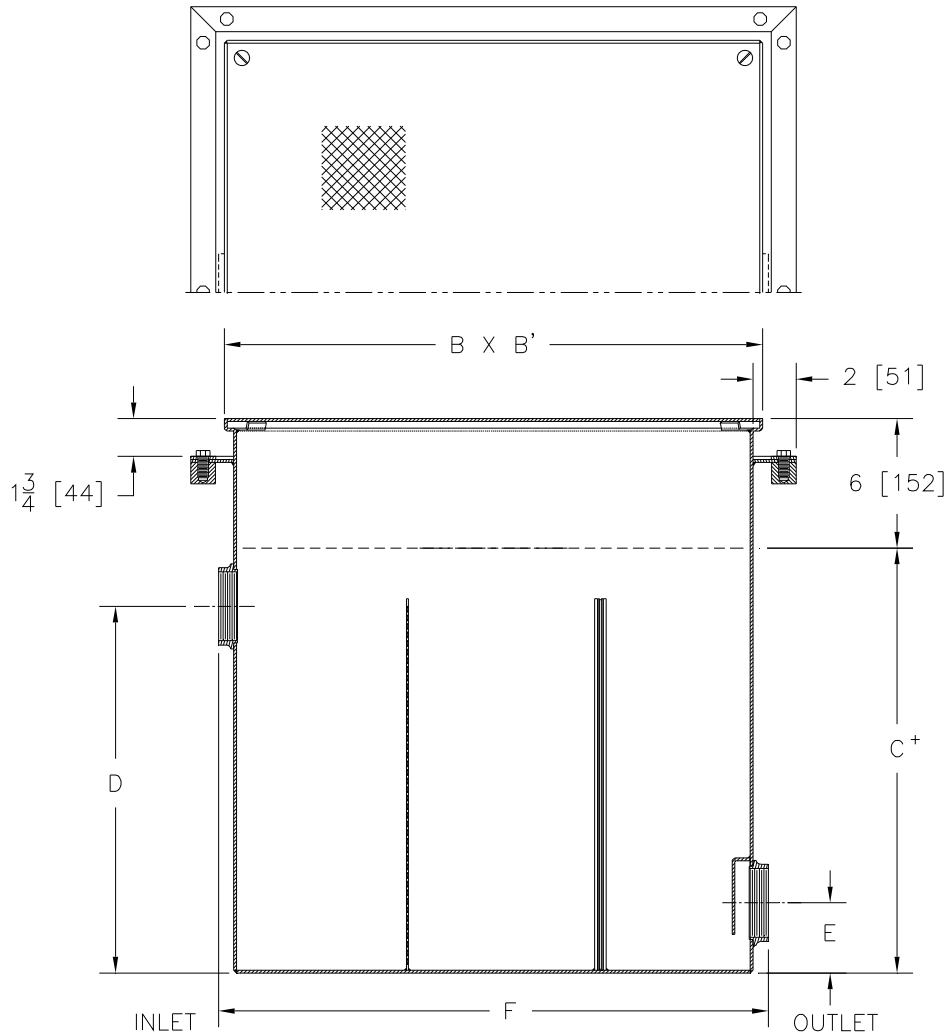
# Z1185-114

SPECIFICATION SHEET

## LINT INTERCEPTOR W/ 6 [152] INTEGRAL EXTENSION, ANCHOR FLANGE & CLAMP COLLAR

TAG \_\_\_\_\_

Dimensional Data (inches and [ mm ]) are Subject to Manufacturing Tolerances and Change Without Notice



Size No. of Machines	Inlet/Outlet Size	Flow Rate G.P.M. [L]	Approx. Wt. Lbs. [kg]	Dimensions In Inches					
				B	B'	C	D	E	F
7	3 [76]	70 [265]	178 [81]	25 [635]	25 [635]	20 [508]	17 [432]	3 1/4 [82]	25 1/2 [648]

**ENGINEERING SPECIFICATION: ZURN Z1185-114**

Acid Resistant Coated interior and exterior fabricated steel lint interceptor with integral extension, anchor flange with clamp collar, non-skid secured cover, stainless lint intercepting secondary screen assembly and permanent primary straining baffle. Regularly furnished with high inlet and low outlet.

**OPTIONS** (Check/specify appropriate options)

**PREFIXES**

\_\_\_\_ Z Acid Resistant Coated Fabricated Steel\*

**SUFFIXES**

\_\_\_\_ -RS Stainless Steel Screen Replacement Assembly

+ NOTE: 'C' Dimension is standard height of interceptor body.

REV.	DATE: 10/16/08	C.N. NO. 99211
DWG. NO. P-15612	PRODUCT NO. Z1185-114	

\*REGULARLY FURNISHED UNLESS OTHERWISE SPECIFIED