



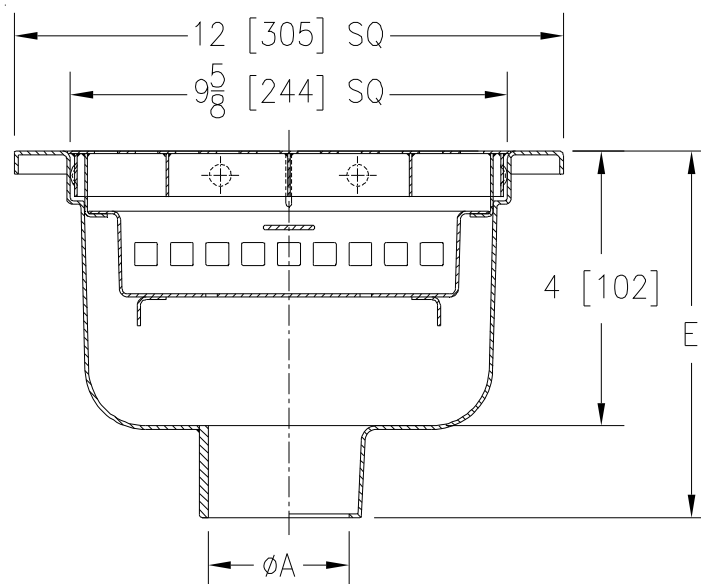
Z1749-YS

12 X 12 [305 x 305] SANI-FLOR RECEPTOR WITH
4 [102] SUMP DEPTH & SUSPENDED SEDIMENT BUCKET

SPECIFICATION SHEET

TAG _____

Dimensional Data (inches and [mm]) are Subject to Manufacturing Tolerances and Change Without Notice



A- Pipe Size In. [mm]	Approx. Wt. Lbs. [kg]	Grate Open Area Sq. In. [cm ²]
2, 3, 4 [51, 76, 102]	15 [7]	23 [148]

ENGINEERING SPECIFICATION: ZURN Z1749-YS

12" x 12" x 4" [305mm x 305mm x 102mm] deep, 16 gage, All Type 304 (CF8) Stainless Steel light-duty Sani-Flor receptor with non-tilt, loose set full grate with 1/2" [13mm] square openings and suspended sediment bucket.

OPTIONS (Check/specify appropriate options)

PIPE SIZE

2, 3, 4 [51, 76, 102]

2, 3, 4 [51, 76, 102]

(Specify size/type) **OUTLET**

___ NH No-Hub

___ NL Neo-Loc

'E' BODY HT. DIM.

6-1/16 [154]

5-13/16 [148]

PREFIXES

___ Z Type 304 (CF8) Stainless Steel Body*

___ ZM Type 316 (CF8M) Stainless Steel

SUFFIXES

___ -DX Dex-o-tex Flange

___ -HD Extra-Heavy-Duty Top Frame and Grate

___ -HP Heel-Proof Grate

___ -K Anchor Flange (May not be used with -P)

___ -KC Anchor Flange w/ Seepage Holes and Clamp Collar (May not be used with -P)

___ -P 1/2 [13] Trap Primer Connection (May not be used with -K & -KC)

___ -TC Neo-Loc Test Cap Gasket

(3,4 [51,76,102] NL Bottom Outlet Only)

___ -VP Vandal-Proof Secured Top

___ -2 1/2 Grate

___ -3 3/4 Grate

___ -4 Full Grate w/ 3 [76] Square Opening

___ -5 Grate w/ 4 [102] dia. x 3-3/4 [95] High Funnel

___ -8 Grate w/ 8-3/8 x 3-5/8 x 3-3/4 [213 x 92 x 95] High Oval Funnel

* Regularly furnished unless otherwise specified.