

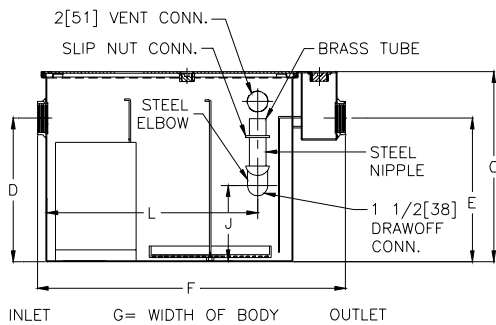
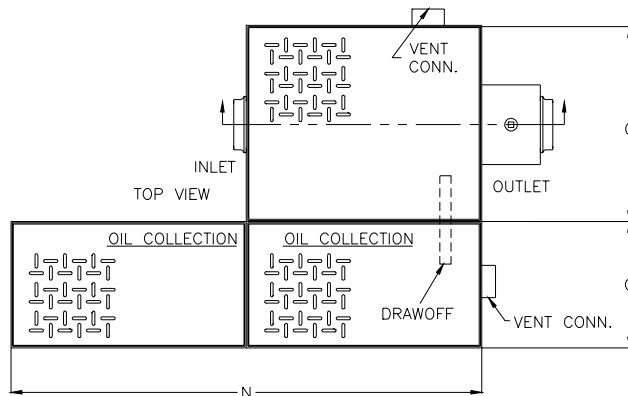


Z-1188-113 OIL INTERCEPTOR

SPECIFICATION SHEET

TAG _____

Dimensional Data (inches or [mm]) are Subject to Manufacturing Tolerances and Change Without Notice



R = DEPTH OF STORAGE TANK
G = WIDTH OF BODY

FlowRate GPM[L]Min.	Oil Storage Tank Cap. Gal. [L]	No. of Covers	
		Trap	Tank
75[284]	100[379]	1	1
100[379]	200[757]	1	1
125[473]	200[757]	2	2
150[568]	200[757]	2	2
200[757]	300[1136]	2	2
250[946]	300[1136]	2	2
300[1136]	300[1136]	2	2
350[1325]	500[1893]	2	2
400[1514]	500[1893]	2	2
450[1703]	500[1893]	2	2
500[1893]	500[1893]	2	2

FlowRate GPM[L]Min	Inlet/Outlet Size**	Water Capacity Gal. [L]	App. Wt. Lbs. [Kg]	Dimensions In Inches								
				C	D/E	F	G	J	L	N	Q	R
75[284]	3[76]	65[246]	332[151]	22 3/4[578]	18 1/2[470]	36[914]	28 5/8[727]	8[203]	25 3/4[654]	26[660]	46[1168]	28 5/8[727]
100[379]	3[76]	110[416]	432[196]	27[686]	23[584]	42 3/4[1086]	33 5/8[854]	10[254]	30 1/8[765]	67[1702]	46[1168]	32[813]
125[473]	3[76]	150[568]	780[354]	30 1/8[765]	24 1/2[622]	49 1/4[1251]	40[1016]	14 1/4[362]	36 5/8[930]	67[1702]	46[1168]	32[813]
150[568]	4[102]	190[719]	888[403]	30 3/4[781]	25 1/4[641]	56[1422]	41 3/8[1051]	14[356]	43 7/8[1114]	67[1702]	46[1168]	32[813]
200[757]	4[102]	265[1003]	1055[479]	35 1/2[902]	29 7/8[759]	61[1549]	43 5/8[1108]	18[457]	46 5/8[1184]	79[2007]	46[1168]	41[1041]
250[946]	5[127]	460[1741]	1438[652]	41[1041]	36[914]	71[1803]	51 3/8[1305]	20[508]	56 5/8[1438]	79[2007]	46[1168]	41[1041]
300[1136]	5[127]	660[2498]	1840[835]	46 1/4[1175]	39 5/8[1006]	80[2032]	58 3/8[1483]	20 5/8[524]	65 5/8[1667]	79[2007]	46[1168]	41[1041]
350[1325]	6[152]	860[3255]	2180[989]	50 1/2[1283]	43 7/8[1114]	87[2210]	63 5/8[1616]	20 1/4[514]	74 1/8[1883]	79[2007]	46[1168]	65 1/4[1657]
400[1514]	6[152]	1090[4126]	2536[1150]	54 1/4[1378]	47 5/8[1210]	94[2388]	67[1702]	20 1/2[521]	79 1/8[2010]	79[2007]	46[1168]	65 1/4[1657]
450[1703]	6[152]	1275[4826]	2816[1277]	55 1/4[1403]	48 5/8[1235]	100[2540]	72[1829]	22 1/4[565]	85 3/8[2169]	79[2007]	46[1168]	65 1/4[1657]
500[1893]	6[152]	1435[5423]	2970[1347]	57 1/4[1454]	51 5/8[1311]	104[2642]	74[1880]	23 1/4[591]	88 3/8[2245]	79[2007]	46[1168]	65 1/4[1657]

ENGINEERING SPECIFICATION: ZURN Z-1188-113 Large capacity Acid Resistant Coated interior and exterior fabricated steel oil interceptor, with internal air relief by-pass, bronze cleanout plug and visible double wall trap seal, removable combination pressure equalizing/flow diffusing baffle and sediment bucket, horizontal baffle, adjustable oil drawoff and vent connections. Secured gasketed non-skid cover complete with flow control fitting and integral storage tank. Regularly furnished with inlet and outlet in high position.

OPTIONS (Check/specify appropriate options)

PREFIXES

_____ **Z-** Acid Resistant Coated Fabricated Steel*

SUFFIXES

_____ **-E** Acid Resistant Coated interior and exterior fabricated steel extension section. (Specify 'C' Dim. required) for recessed installation.

_____ **-HD** Heavy duty traffic cover rated at 10,000 lbs [4536] kg. maximum safe live load.

_____ **-K** Anchor flange 1 3/4 [44] down from top and 2 [51] wide. No extension required to accommodate -K.

_____ **-KC** Anchor flange 1 3/4 [44] down from top and 2 [51] wide with clamp collar.

REV.	DATE: 12/21/99	C.N. NO. 84061
DWG. NO. P-14761	PRODUCT NO. Z-1188-113	

*REGULARLY FURNISHED UNLESS OTHERWISE SPECIFIED