



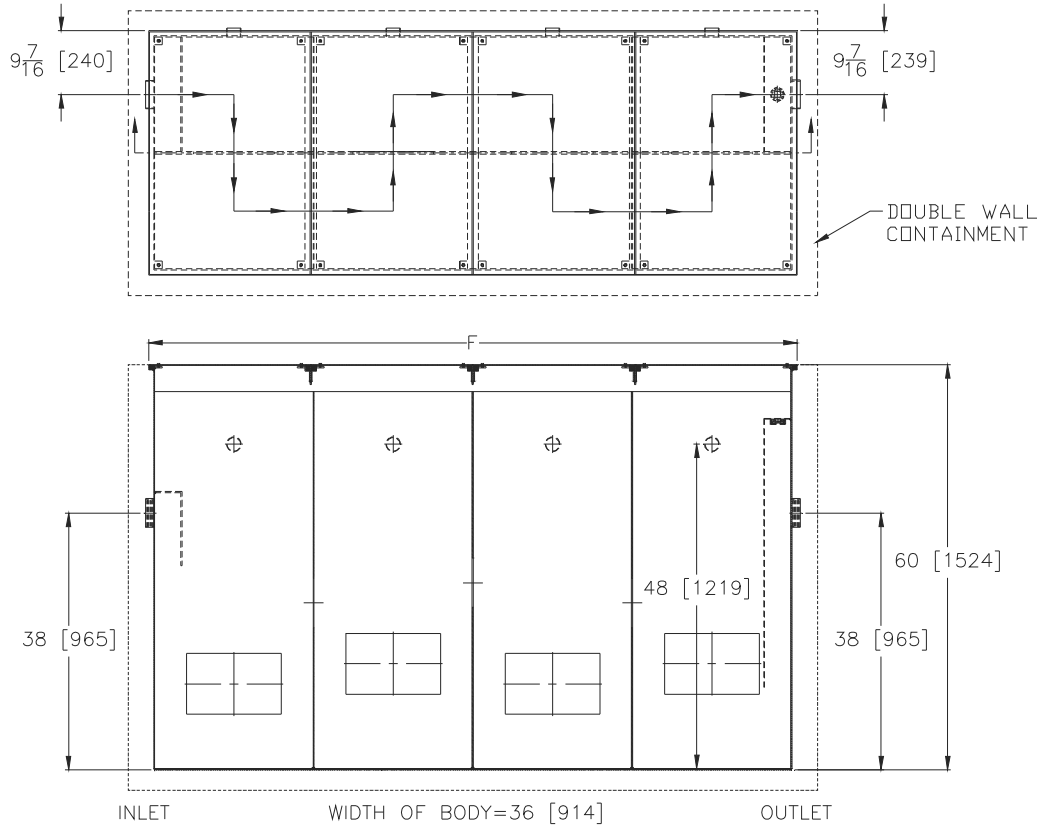
Z1187-94

SAND AND SEDIMENT INTERCEPTOR W/ DOUBLE WALL CONTAINMENT

SPECIFICATION SHEET

TAG _____

Dimensional Data (inches and [mm]) are Subject to Manufacturing Tolerances and Change Without Notice



Size	Cubic Ft. [cm]	Approx. Wt.Lbs. [kg]	F-Dim in Inches [mm]
300	43 [1.2]	2312 [1049]	60 [1524]
400	54 [1.5]	2580 [1170]	72 [1829]
500	72 [2]	3172 [1439]	96 [2438]
600	81 [2.3]	3692 [1675]	108 [2743]
700	90 [2.5]	4012 [1820]	120 [3048]
800	108 [3]	4552 [2065]	144 [3658]
1000	135 [3.8]	5552 [2518]	180 [4572]

ENGINEERING SPECIFICATION: ZURNZ1187-94

Acid Resistant Coated interior and exterior fabricated steel sand and sediment interceptor, ___ cu. ft. capacity below invert of outlet, 4" [102mm] threaded inlet and outlet, four 2" [51mm] threaded individual vent connections, complete with scoriated non-skid removable cover(s) and double wall containment tank.

Note:

1. Double wall construction will extend the overall length and width of the unit by 3 [76] per side and increase the overall depth by 3 [76].

OPTIONS (Check/specify appropriate options)

PREFIXES

___ Z Acid Resistant Coated Fabricated Steel*

SUFFIXES

- ___ -E Integral extension assembly for recessed installation (Specify overall height required)
- ___ -HD Heavy Duty Cover rated at 10,000 lb. [4536] Kg. maximum safe live load.
- ___ -K Anchor flange 1-3/4 [44] down from top and 2 [51] wide. No extension required to accommodate -K option.

* Regularly furnished unless otherwise specified.