



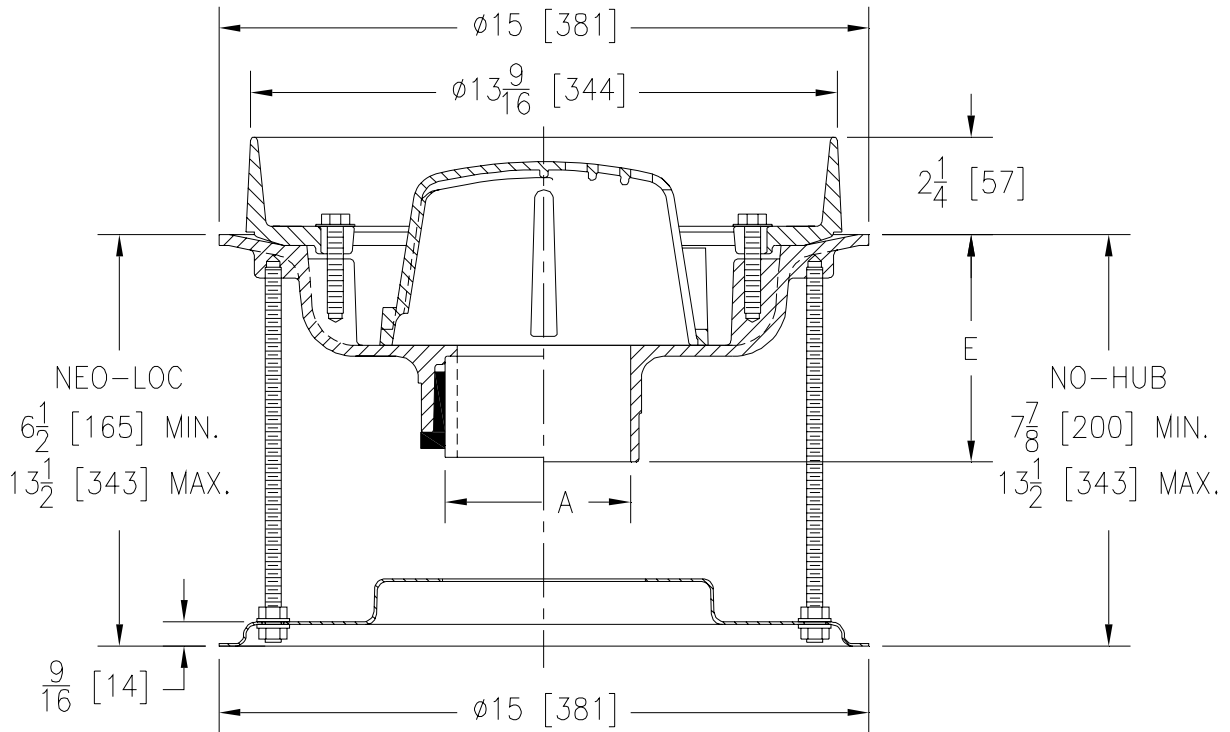
Z108-78

15 [381] DIAMETER DECK RECEPTOR W/ STABILIZER ASSEMBLY

SPECIFICATION SHEET

TAG _____

Dimensional Data (inches and [mm]) are Subject to Manufacturing Tolerances and Change Without Notice



A Pipe Size	Approx. Wt. Lbs. [kg]	Dome Open Area Sq. In. [cm ²]
2-3-4 [51-76-102]	45 [20]	53 [342]

ENGINEERING SPECIFICATION: ZURN Z108-78

15 [381] Diameter roof drain, Dura-Coated cast iron body with combination membrane flashing clamp, deck receptor frame, internal bottom dome strainer and stabilizer assembly.

OPTIONS (Check/specify appropriate options)

PIPE SIZE

2 thru 4 [51 thru 102]
2 thru 4 [51 thru 102]

(Specify size/type) **OUTLET**

___ NH No-Hub
___ NL Neo-Loc

'E' BODY HT. DIM.

5 1/4 [133]
4 9/16 [116]

PREFIXES

___ Z D.C.C.I. Body with Collar*

SUFFIXES

- ___ -AR Acid Resistant Epoxy Coated
- ___ -DX Dex-o-tex Flange
- ___ -E Static Extension 1 [25] thru 4 [102] (Specify Ht.)
- ___ -EA Adjustable Extension Assembly 2 1/8 [54] thru 3 1/2 [89]
- ___ -FG Flush Grate (Replaces Dome Strainer)
- ___ -G Galvanized Cast Iron
- ___ -HD 6 3/4 [171] High Aluminum Dome Strainer
(61 Sq. In. [394 cm²] Open Area)
- ___ -TC Neo-Loc Test Cap Gasket
(2 - 4 [51 - 102] NL Bottom Outlet Only)

REV. **DATE: 7/25/08** **C.N. NO. 98895**

DWG. NO. P-15577 **PRODUCT NO. Z108-78**

*REGULARLY FURNISHED UNLESS OTHERWISE SPECIFIED