



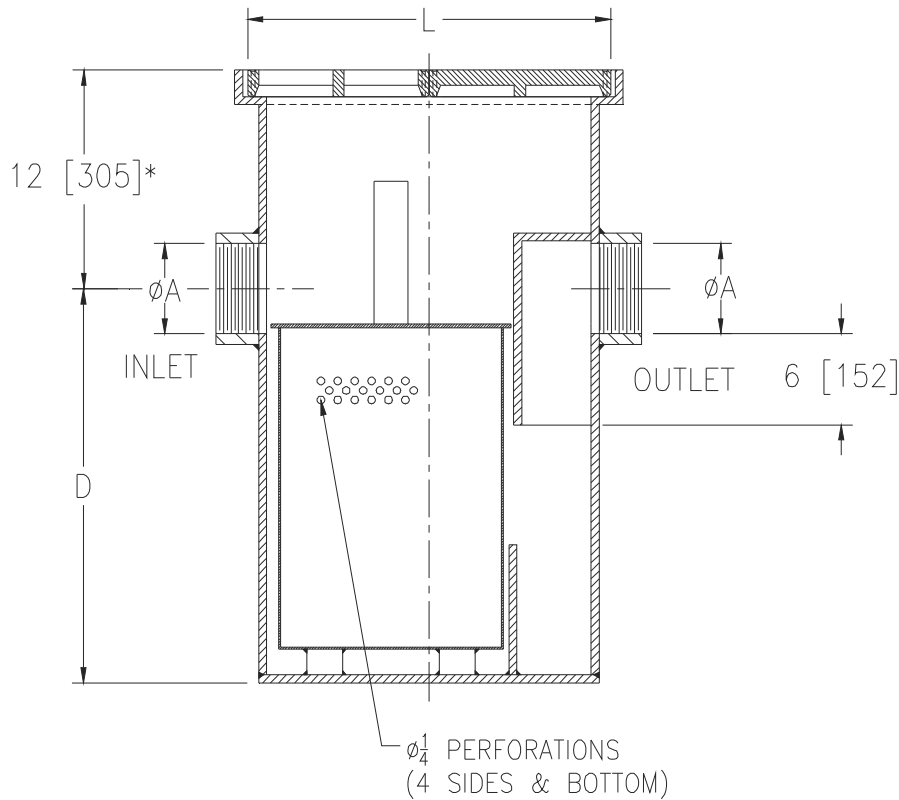
# Z1187-SI-125

SEDIMENT INTERCEPTOR WITH  
SEDIMENT BASKET & SOLID GRATE OVER OUTLET

SPECIFICATION SHEET

TAG \_\_\_\_\_

Dimensional Data (inches and [ mm ]) are Subject to Manufacturing Tolerances and Change Without Notice



Size	Flow G.P.M. [L] (Max.)	Dimension in In [mm]				Capacity Gal. [L] (Static)
		A Pipe Size	L	D	Width	
20	20 [76]	4 [102]	24 [610]	26 [660]	24 [610]	60 [227]

**ENGINEERING SPECIFICATION:** ZURN Z1187-SI-125

Acid Resistant Coated interior and exterior fabricated steel sediment interceptor with threaded inlet and outlet, complete with removable perforated sediment basket and heavy-duty grate over inlet and heavy-duty solid cover over outlet.

**OPTIONS** (Check/specify appropriate options)

**PREFIXES**

\_\_\_ Z Acid Resistant Coated Fabricated Steel\*

**SUFFIXES**

- \_\_\_ -E 6 [152] Integral Extension Assembly for Recessed Installation
- \_\_\_ -NH No-Hub Inlet and Outlet
- \_\_\_ -VP Vandal-Proof Screws

\* Regularly furnished unless otherwise specified.