



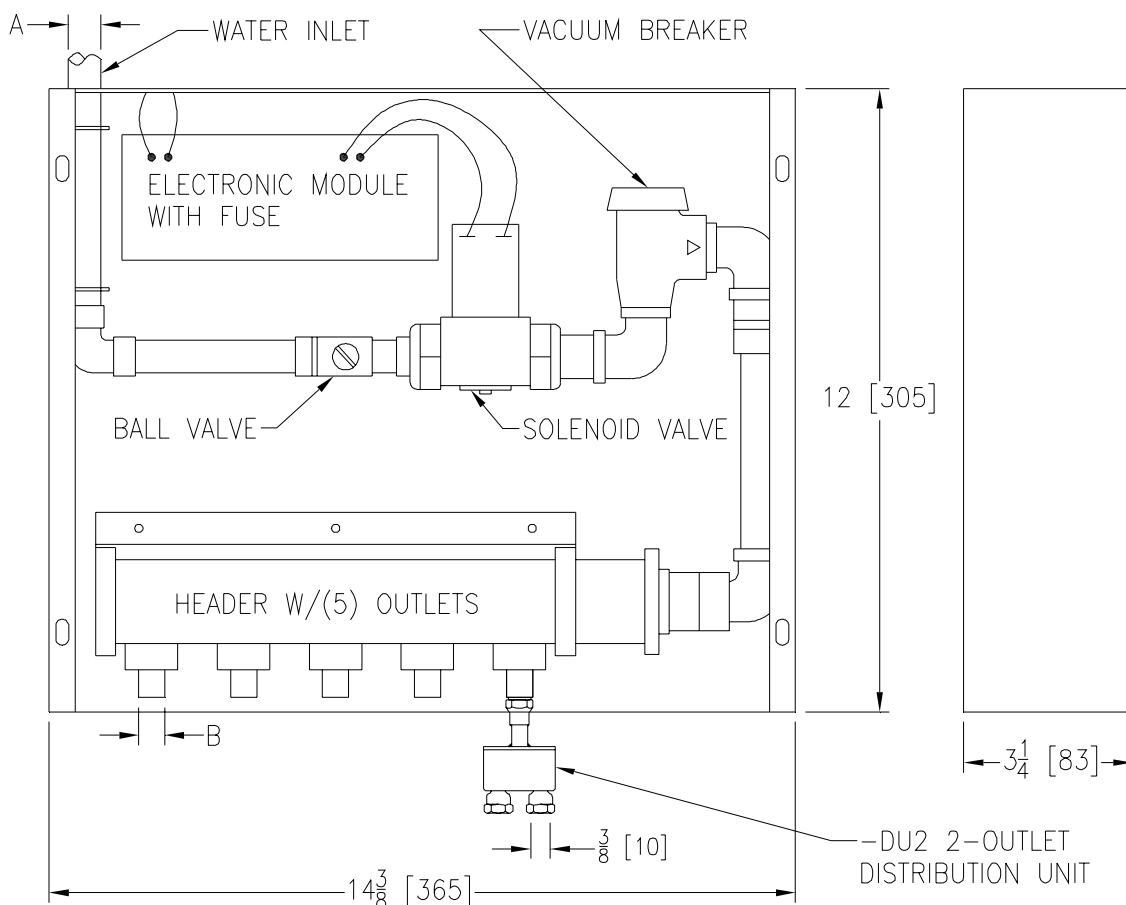
# Z1020-CW-DU2

## ELECTRONIC TRAP PRIMER W/ 2-OUTLET DISTRIBUTION UNIT AND COPPER WATERWAY

SPECIFICATION SHEET

TAG \_\_\_\_\_

Dimensional Data (inches and [ mm ]) are Subject to Manufacturing Tolerances and Change Without Notice



Dimensions in Inches		Approx. Wt. Lbs. [kg]
A	B	
1/2 [13]	1/2 [13]	12 [5]

**ENGINEERING SPECIFICATION: ZURN Z1020-CW-DU2**

Electronic trap primer programmed as standard to provide a six second water injection to traps every twenty-four hours\*, complete with galvanized steel combination surface or recessed mount box and cover, 1/2 [13] solder copper inlet connection, brass ball type stop valve, slow closing 24 VAC solenoid valve with integral strainer, 120 - 24 VAC transformer, brass atmospheric vacuum breaker, copper waterway, and anti-scaling multi-port manifold with five 1/2 [13] Female I.P.S. outlet connections. ( ) outlet(s) to be provided with -DU2 (2-Outlet Distribution Unit) for additional outlet connections.

Note: Distribution unit outlets are 3/8 N.P.T.

\*REGULARLY FURNISHED UNLESS OTHERWISE SPECIFIED

REV.	DATE: 3/16/09	C.N. NO. 99815
DWG. NO. 84142	PRODUCT NO. Z1020-CW-DU2	

ZURN INDUSTRIES, INC. ♦ SPECIFICATION DRAINAGE OPERATION ♦ 1801 Pittsburgh Ave. ♦ Erie, PA 16514

Phone: 814/455-0921 ♦ Fax: 814/454-7929 ♦ World Wide Web: www.zurn.com

In Canada: ZURN INDUSTRIES LIMITED ♦ 3544 Nashua Drive ♦ Mississauga, Ontario L4V1L2 ♦ Phone: 905/405-8272 Fax: 905/405-1292