



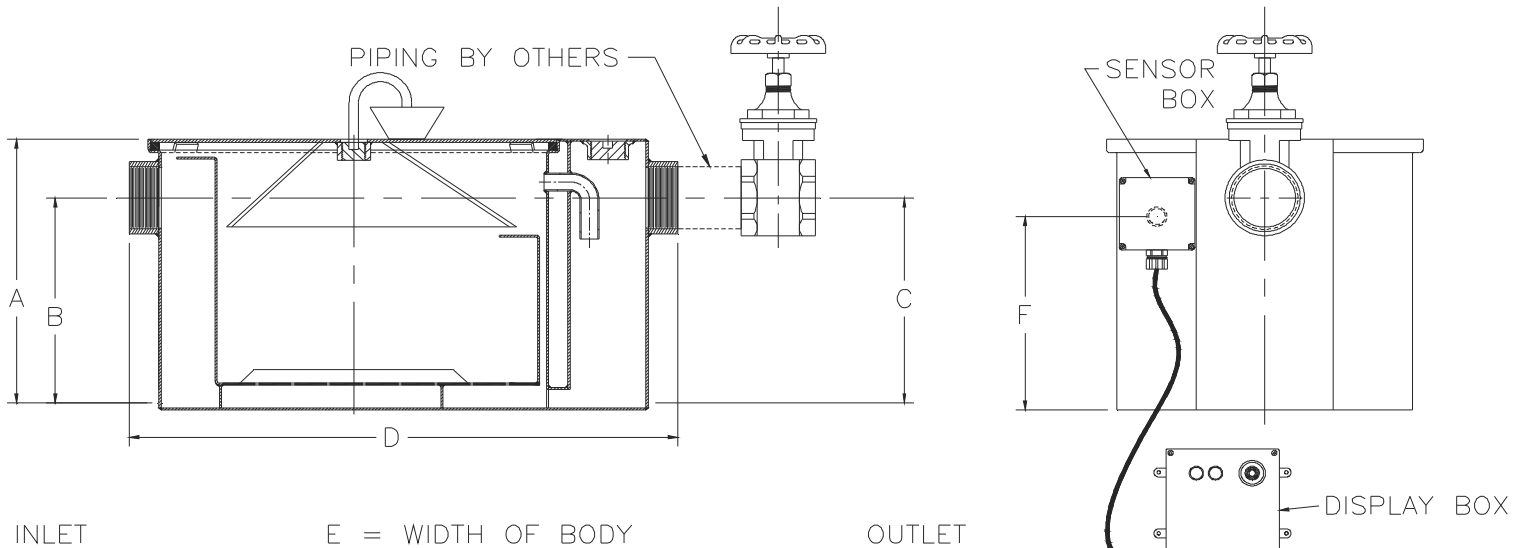
Z1173-TD-88

GREASE INTERCEPTOR W/ GREASE ACCUMULATING CONE, INLINE SHUTOFF VALVE, AND USER NOTIFICATION SYSTEM

SPECIFICATION SHEET

TAG _____

Dimensional Data (inches and [mm]) are Subject to Manufacturing Tolerances and Change Without Notice



Size	Inlet/Outlet Size**	Flow Rate G.P.M. [L]	Capacity		Approx. Wt. Lbs. [kg]
			Water Gal. [L]	Grease Lbs. [kg]	
400	3[76]	15 [57]	10 [38]	30 [14]	190 [86]
500	3[76]	20 [76]	16 [61]	40 [18]	215 [98]
600	3[76]	25 [95]	21 [79]	50 [23]	251 [114]
700	3[76]	35 [132]	30 [114]	70 [32]	290 [132]
800	3[76]	50 [189]	40 [151]	100 [45]	330 [150]

Dimensions in Inches [mm]					
Size	A	B/C	D	E	F
400	13-3/8 [304]	9-3/8 [238]	27-1/8 [689]	16-3/4 [425]	5-11/16 [145]
500	15 [381]	11-3/4 [298]	30 [762]	17-1/4 [438]	7-3/4 [197]
600	17 [432]	12-1/2 [318]	32-1/4 [819]	19-7/8 [505]	8-1/2 [216]
700	18-3/4 [476]	14-1/4 [362]	34-1/8 [867]	22-1/2 [572]	9-7/8 [251]
800	21-1/2 [546]	16 [406]	36 [914]	24-1/2 [622]	11 [279]

ENGINEERING SPECIFICATION: ZURN Z1173-TD-88

Acid Resistant Coated interior and exterior fabricated steel grease interceptor, rated at ____ GPM and ____ Lbs. grease capacity, with internal air relief by-pass, bronze cleanout plug and visible double wall trap seal with removable combination pressure equalizing/flow diffusing baffle and sediment tray. Gasketed non-skid secured cover with draw off port having bronze plug, grease accumulating cone, NPT to hose adaptor, 2' [610] flexible hose, hose clamp, and an in-line closure valve. Z1108 Flow Control Fitting. User notification system includes encased fiberglass sensor box containing an electronic grease level sensor, fiberglass display box w/ visual/audio alarm and junction box. Regularly furnished inlet and outlet in high position. Note: Location of outlet from bottom of interceptor cannot be changed.

PREFIXES

____ Z Acid Resistant Coated Fabricated Steel*

SUFFIXES

____ -L Angle type (Z1108-L) flow control device with plunger (no additional charge).

** Inlet and outlet sizes shown indicate standard operating sizes and flow control settings. Sizes #600 thru #800 will have 4[102] connections reduced to 3[76] as standard. If changed, flow control must be adjusted accordingly.

* Regularly furnished unless otherwise specified.