



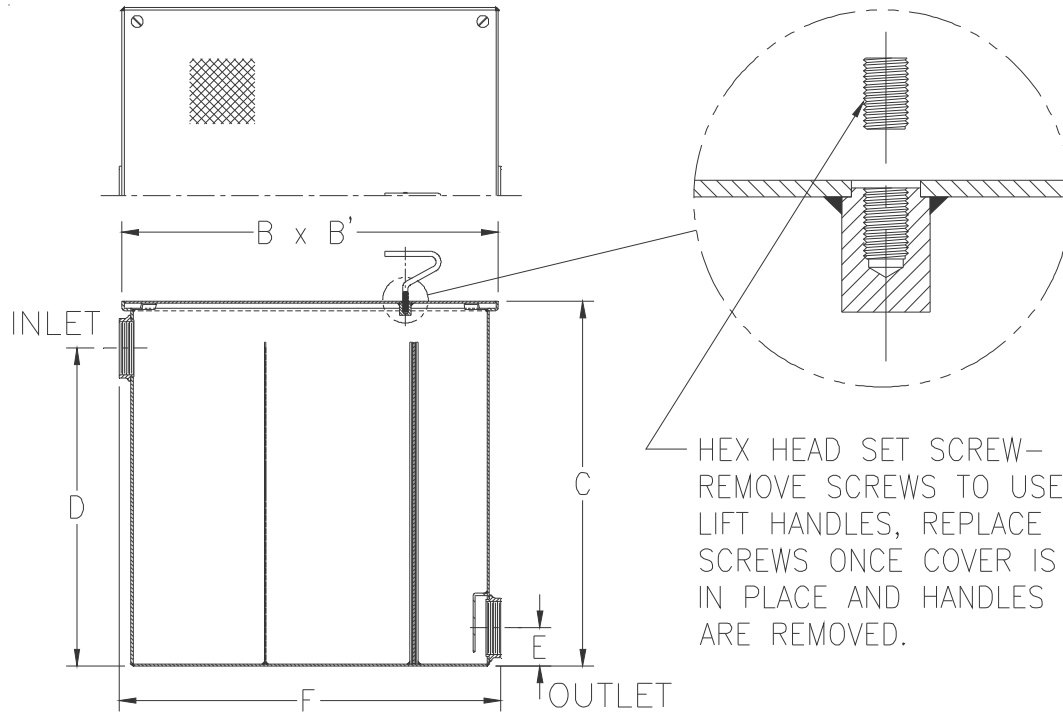
# Z1185-133

## LINT INTERCEPTOR WITH CUSTOM 10-1/2 [267] HEIGHT

SPECIFICATION SHEET

TAG \_\_\_\_\_

Dimensional Data (inches and [ mm ]) are Subject to Manufacturing Tolerances and Change Without Notice



Approx. Wt. Lbs. [kg]	Dimensions In Inches					
	B	B'	C	D	E	F
93 [42]	14 [356]	14 [356]	13 [330]	10-1/2 [267]	3-1/4 [82]	14-1/2 [368]

**ENGINEERING SPECIFICATION: ZURNZ1185-133**

Acid Resistant Coated interior and exterior fabricated steel lint interceptor, non-skid secured cover with removable lift handle, stainless lint intercepting secondary screen assembly with 3/32 [2] Square openings, permanent primary straining baffle with 3/8 [10] diameter perforated holes, and custom 10-1/2 [267] inlet height. Regularly furnished with high inlet and low outlet.

**OPTIONS** (Check/specify appropriate options)

**PREFIXES**

- \_\_\_\_ Z Acid Resistant Coated Fabricated Steel\*
- \_\_\_\_ ZS All Type 304 Fabricated Stainless Steel

**SUFFIXES**

- \_\_\_\_ -E Acid Resistant Coated interior and exterior fabricated steel extension section (Specify 'C' dimension required for recessed installation).
- \_\_\_\_ -RS Stainless Steel Screen Replacement Assembly

REV.	DATE: 12/26/12	C.N. NO. 128619
DWG. NO. 311154	PRODUCT NO. Z1185-133	

\*REGULARLY FURNISHED UNLESS OTHERWISE SPECIFIED