



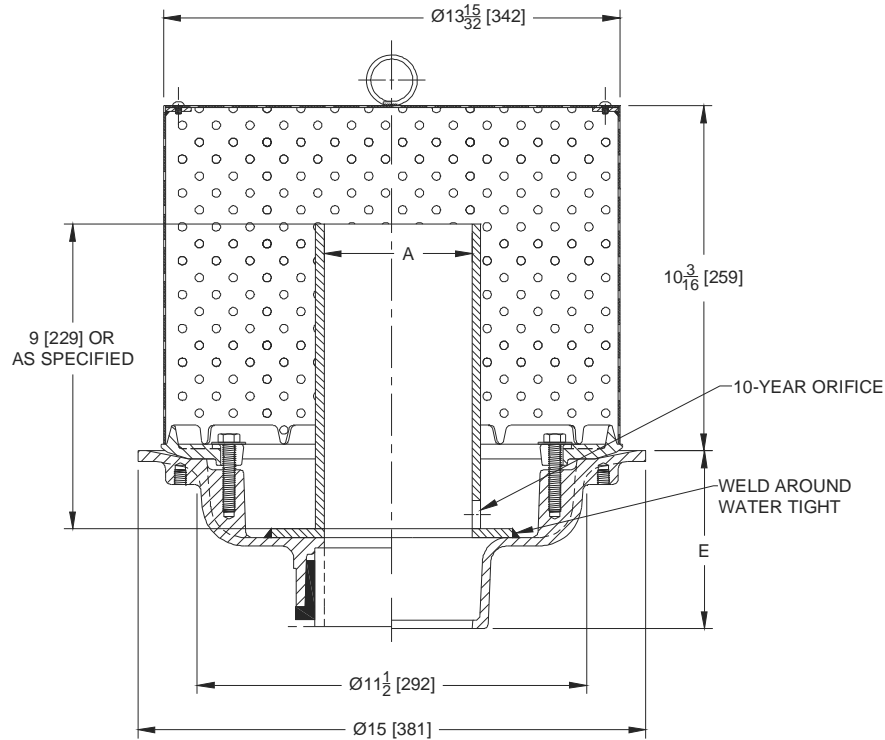
# Z100-358

Ø15 [381] MAIN ROOF DRAIN WITH CONTROL FLOW ORIFICE & HIGH STAINLESS STEEL PERFORATED COVER

SPECIFICATION SHEET

TAG \_\_\_\_\_

Dimensional Data (inches and [ mm ]) are Subject to Manufacturing Tolerances and Change Without Notice



A Pipe Size In.	Approx. Wt. Lbs. [kg]	Cover Open Area Sq. In. [cm <sup>2</sup> ]
2,3,4 [51,76,102]	26-1/2 [12]	118 [761]
5,6 [51,127,152]	27-1/2 [12]	
8 [203]	28-1/2 [13]	

**ENGINEERING SPECIFICATION: ZURN Z100-358**

15" [381mm] Diameter roof drain. Dura-Coated cast iron body with combination membrane flashing clamp/gravel guard and water dam featuring 10-year and flow orifices with high stainless steel perforated cover.

**OPTIONS** (Check/specify appropriate options)

**PIPE SIZE**

- 3,4,6 [76,102,152]
- 2,3,4,6,8 [51,76,102,152,203]
- 2,3,4,6,8 [51,76,102,152,203]
- 2,3,4 [51,76,102]
- 6 [152]

(Specify size/type) **OUTLET**

- \_\_\_\_\_ IC Inside Caulk
- \_\_\_\_\_ IP Threaded
- \_\_\_\_\_ NH No-Hub
- \_\_\_\_\_ NL Neo-Loc
- \_\_\_\_\_ NL Neo-Loc

**E BODY HT. DIM.**

- 5-1/4 [133]
- 3-3/4 [95]
- 5-1/4 [133]
- 4-9/16 [116]
- 5-7/16 [112]

**PREFIXES**

- \_\_\_\_\_ Z D.C.C.I. Body with Stainless Steel Perforated Cover\*

**SUFFIXES**

- |   |  |
|---|--|
| _____ -AC Angular Underdeck Clamp                           | _____ -EB Top-Set® Adjustable Extension Assembly |
| _____ -AR Acid Resistant Epoxy Coated                       | _____ -G Galvanized Cast Iron                    |
| _____ -C Underdeck Clamp                                    | _____ -R Roof Sump Receiver                      |
| _____ -DE Deck Extension                                    | _____ -SC Secondary Clamp Collar                 |
| _____ -DP Top-Set® Deck Plate (Replaces both the -C and -R) | _____ -VP Vandal-Proof Secured Top               |
| _____ -DR Top-Set® Drain Riser                              | _____ -85 Stainless Steel Perforated Extension   |
| _____ -DX Dex-o-tex Flange                                  | _____ -89 2 [51] High External Water Dam         |

\* Regularly furnished unless otherwise specified.