



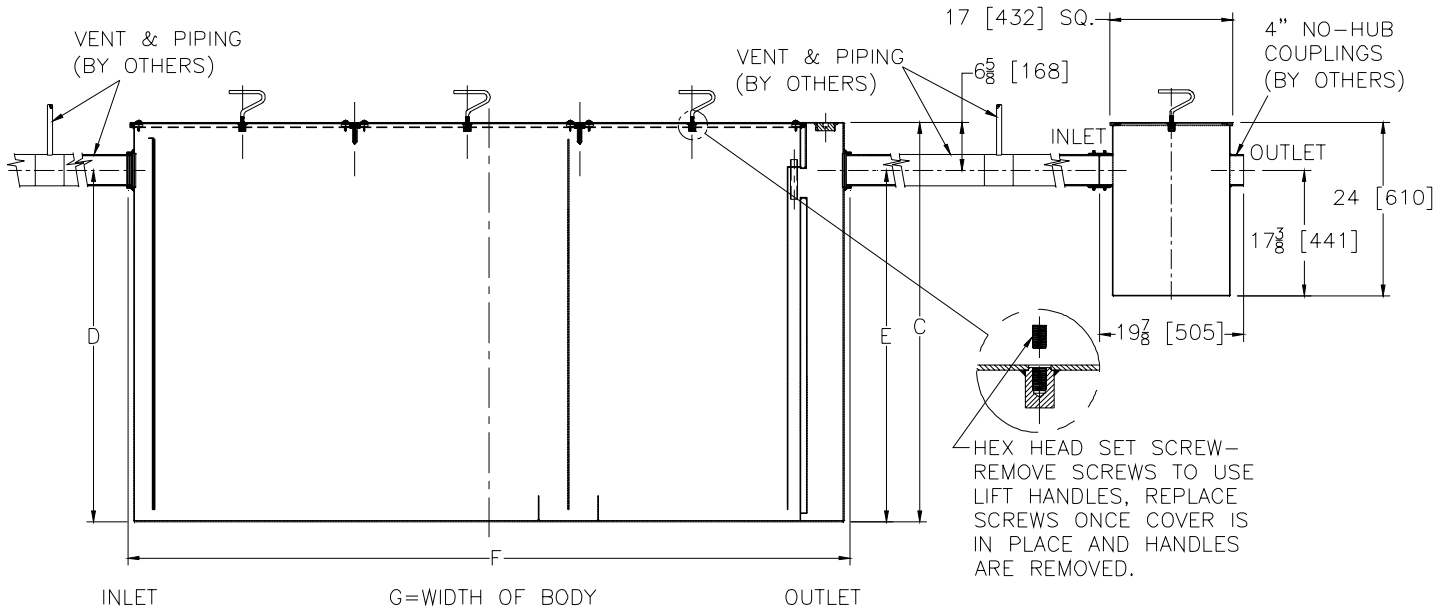
# Z1172-159

SPECIFICATION SHEET

## 200 GPM [756] LARGE CAPACITY GREASE INTERCEPTOR WITH SAMPLING BOX

TAG \_\_\_\_\_

Dimensional Data (inches and [ mm ]) are Subject to Manufacturing Tolerances and Change Without Notice



Inlet/Outlet Size	Flow Rate G.P.M. [L/min.]	Capacity		No. of Covers	Approx. Wt. Lbs.	Dimensions in Inches			
		Water	Grease			C	D/E	F	G
4 [102]	200 [756]	1280 [4838]	900 [409]	3	2710 [1230]	55 1/4 [1403]	48 5/8 [1235]	100 [2540]	72 [1829]

**ENGINEERING SPECIFICATION:** ZURN Z1172-159

Large capacity Acid Resistant Coated interior and exterior fabricated steel grease interceptor, rated at \_\_\_\_ GPM and \_\_\_\_ Lbs. grease capacity, with internal air relief by-pass, bronze cleanout plug and visible double wall trap seal with removable pressure equalizing/flow diffusing baffle and gasketed non-skid secured covers with removable lift handles. Regularly furnished with inlet and outlet in high position. Complete with acid resistant coated interior and exterior fabricated steel sampling box with a non-skid secured cover.

**OPTIONS** (Check/specify appropriate options)

**PREFIXES**

- \_\_\_ Z Acid Resistant Coated Fabricated Steel\*
- \_\_\_ ZS All Type 304 Fabricated Stainless Steel

**SUFFIXES**

- \_\_\_ -AL Aluminum Cover
- \_\_\_ -E Acid Resistant Coated Interior and exterior fabricated steel extension section. (Specify 'C' Dim. required) for recessed installation.
- \_\_\_ -HD Heavy duty traffic cover rated at 10,000 lbs. 4536 [kg] maximum load. An increased 'C' dim. is required when -HD option is specified. (See -HD option specification sheet)
- \_\_\_ -K Anchor flange 1 3/4 [44] down from top and 2 [51] wide.
- \_\_\_ -KC Anchor flange 1 3/4 [44] down from top and 2 [51] wide with clamp collar.

REV.	DATE: 04/01/10	C.N. NO. 110936
DWG. NO. P-15880	PRODUCT NO. Z1172-159	

\*REGULARLY FURNISHED UNLESS OTHERWISE SPECIFIED