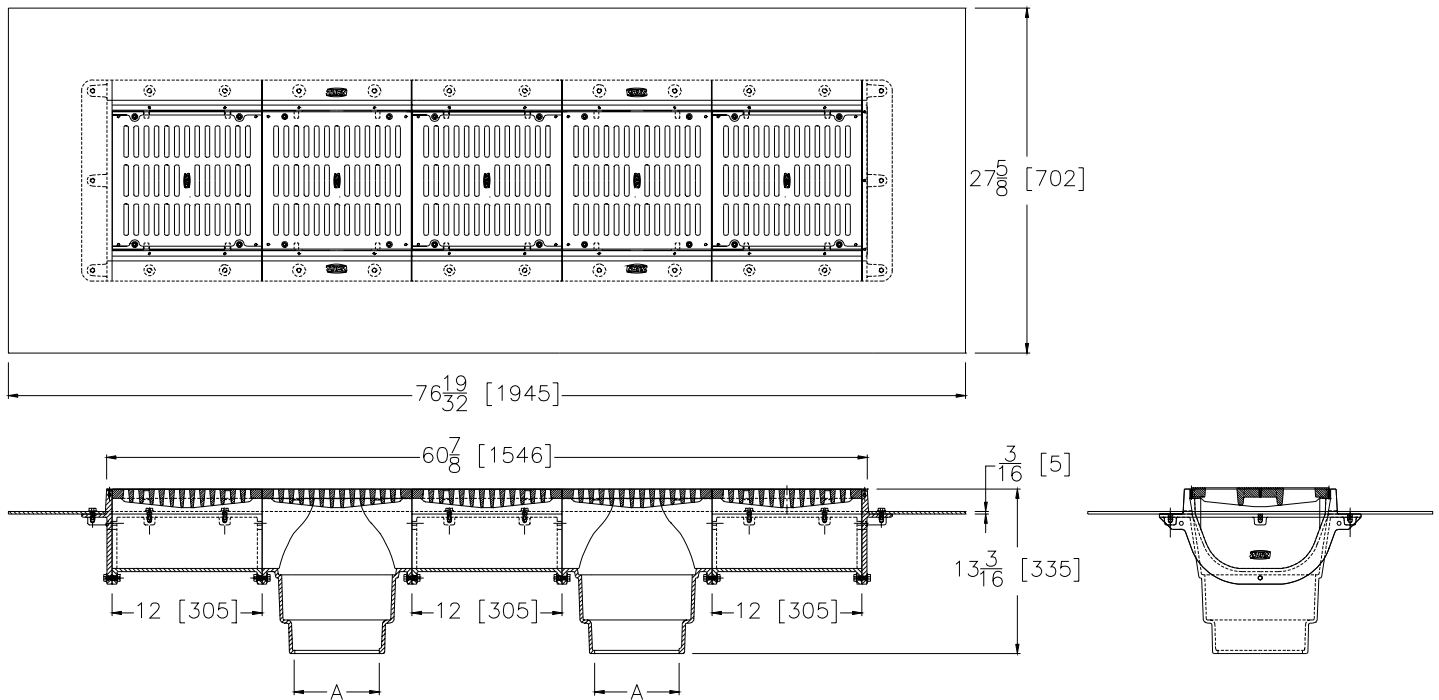




# Z-665-87

## 12" [305] WIDE MODULAR TRENCH DRAIN HEAVY DUTY

Dimensional Data (inches and [ mm ]) are Subject to Manufacturing Tolerances and Change Without Notice



A- Pipe Size In.	Approx. Wt. Lbs. [kg]	Grate Open Area Sq. In. [cm <sup>2</sup> ]
2-3-4 [50-75-100]	100 [45]	180 [1161]
5-6 [125-150]	110 [50]	

**ENGINEERING SPECIFICATION Z-665-87 12 [305] Wide flange modular trench drain, Dura-Coated cast iron deep sump bodies with bottom outlet. The 12 [305] long outlet modules and the 12 [305] extension modules are complete with integral seepage pan and heavy duty loose slotted grate.**

**OPTIONS** (Check/specify appropriate options)

**PIPE SIZE**

- 2 thru 6 [50 thru 150]
- 2 thru 4, 6 [50, 100, 150]
- 2 thru 4 [50, 100, 150]

(Specify size/type) **OUTLET**

- \_\_\_\_\_ IC Inside Caulk
- \_\_\_\_\_ IG Inside Caulk w/Sealtrol Gskt.
- \_\_\_\_\_ NL Neo-Loc

**'E' BODY HT. DIM.**

- 13 3/16 [335]
- 13 3/16 [335]
- 12 1/2 [318]

**PREFIXES**

- \_\_\_\_\_ Z- D.C.C.I. Body and Grate\*
- \_\_\_\_\_ ZB- D.C.C.I Body w/Polished Bronze Top (Add 1/8 [3] to 'E' and 2 [51] Dim.)
- \_\_\_\_\_ ZN- D.C.C.I Body w/Polished Stainless Steel Top Frame and Grate (Add 1/8 [3] to 'E' and 2 [51] Dim.)

**SUFFIXES**

- \_\_\_\_\_ -AR Acid Resisting Epoxy Coated Cast Iron
- \_\_\_\_\_ -DB Bottom Dome Strainer
- \_\_\_\_\_ -DG Duresist Grate
- \_\_\_\_\_ -G Galvanized Cast Iron
- \_\_\_\_\_ -HP Heelproof Grate
- \_\_\_\_\_ -TS Top Secured With Slotted Screws
- \_\_\_\_\_ -VP Vandal Proof Secured Top
- \_\_\_\_\_ -Y Sediment Bucket

\*REGULARLY FURNISHED UNLESS OTHERWISE SPECIFIED

REV.	DATE: 06/05/96	C.N. NO. 75168
DWG. NO. P-14344		PRODUCT NO. Z-665-87