



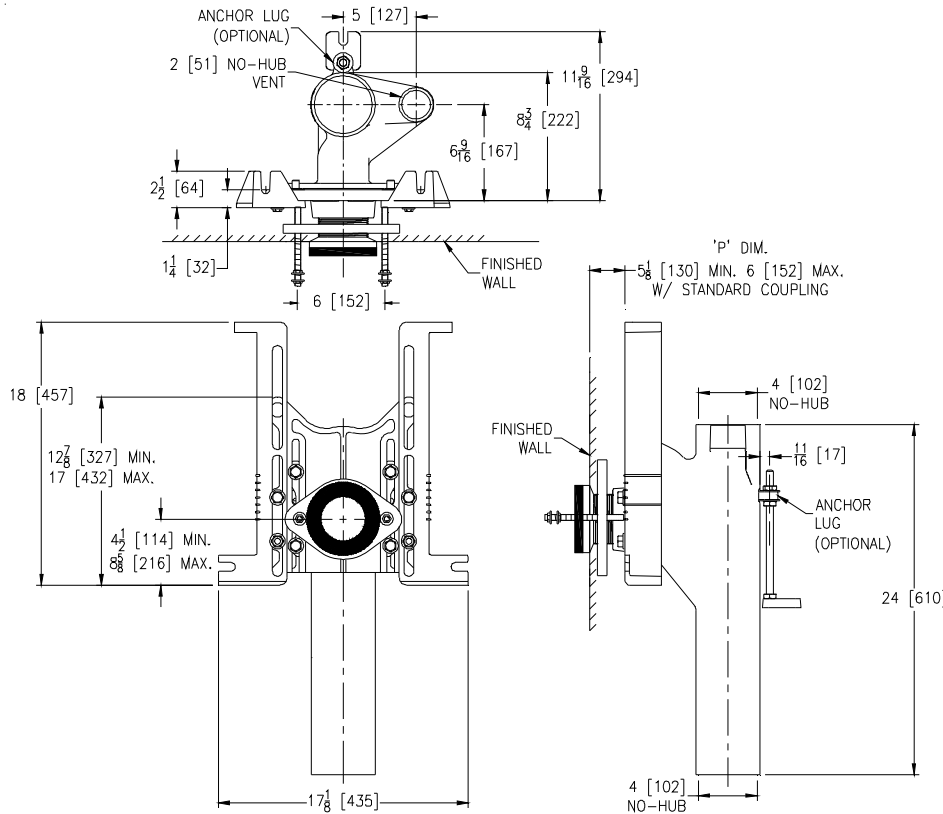
Z1202-N4-95

EZCARRY™ ADJUSTABLE VERTICAL HIGH PERFORMANCE SIPHON
JET NO-HUB WATER CLOSET CARRIER SYSTEM FOR LOW ROUGH-
IN W/FLOOR MOUNTED, BACK OUTLET FIXTURE SUPPORT

SPECIFICATION SHEET

TAG _____

Dimensional Data (inches and [mm]) are Subject to Manufacturing Tolerances and Change Without Notice



Note:

1. Z Coupling Min. 'P' Dim. Obtainable=2 [51]
EZ-Set Coupling Min. 'P' Dim. Obtainable=
4-1/4 [108] or 2-1/16 [52] for 12 [305] NPT.
2. Feet bolted to floor using min.
1/2 [13] dia. anchors.
3. 2 [51] No-Hub vent connection
regularly furnished on right hand
side. Left hand available when
specified (Suffix -VL)
4. Auxiliary inlet available right (-JR)
or left (-JL) or both sides (-JJ) when
specified.

Product Number	Approx. Wt. lbs [kg]
Z1202-N4-95	63 [29]

ENGINEERING SPECIFICATION: ZURN Z1202-N4-95

EZCarry™ vertical siphon jet water closet carrier system with high performance waterway and 4" [102mm] no-hub connections. System includes Dura-Coated cast iron main fitting with hydro-mechanically optimized sweep and extended 2" [51mm] vent, adjustable gasketed modified faceplate, universal floor mounted pre-fab slotted foot supports, heavy-duty 1/2" [13mm] rear anchor tie down, fixture bolts, trim, stud protectors, bonded "Neo-Seal" gasket, and corrosion resistant, adjustable 3" [76mm] dia. X 6" [152mm] coupling with integral test cap designed to increase flow velocity and line carry. Complete with Floor Mounted, Back Outlet Fixture Support.

OPTIONS (Check/specify appropriate options)

___ Z1202-N4-95 4 [102] No-Hub Stack, Single Inlet, 2 [51] Right Hand Vent

PREFIXES

___ Z D.C.C.I. System with Zurn ZZ Adjustable Coupling*
___ ZQ D.C.C.I. System with NPT Faceplate, Non-Adjustable Coupling

SUFFIXES

___ -A	Auxiliary Support Assembly (For 'P' Dim. Greater than 18 [457])	___ -JJ	Two 2 [51] Auxiliary Inlets
___ -CC	Corrosion Resistant Cast Iron Coupling (2-1/4 [57] to 12 [305])	___ -JL	2 [51] Left-Hand Auxiliary Inlet
___ -CE	EZ-Set™ Coupling (Available 6 [152], 12 [305] or longer when specified. Minimum length=5 [127])	___ -JR	2 [51] Right-Hand Auxiliary Inlet
___ -CL	Custom Length Standard Coupling with Integral Test Cap (Specify Length 4, 8, 10, 12 [102, 203, 254, 305])	___ -M	Auxiliary Foot Support (for 'P' Dim. 10 thru 18 [254 thru 457])
___ -CS	2-1/4 [57] Polymer Coupling with Integral Test Cap	___ -RYK17	One Piece Unistrut Pre-Fab Foot
___ -G	Galvanized Cast Iron	___ -VL	Left Hand Vent Connection
		___ -VP	Vandal-Proof Trim
		___ -45	Finishing Frame for Siphon Jet System
		___ -50	Flush Valve Supply Support for Water Closets

* Regularly furnished unless otherwise specified.