



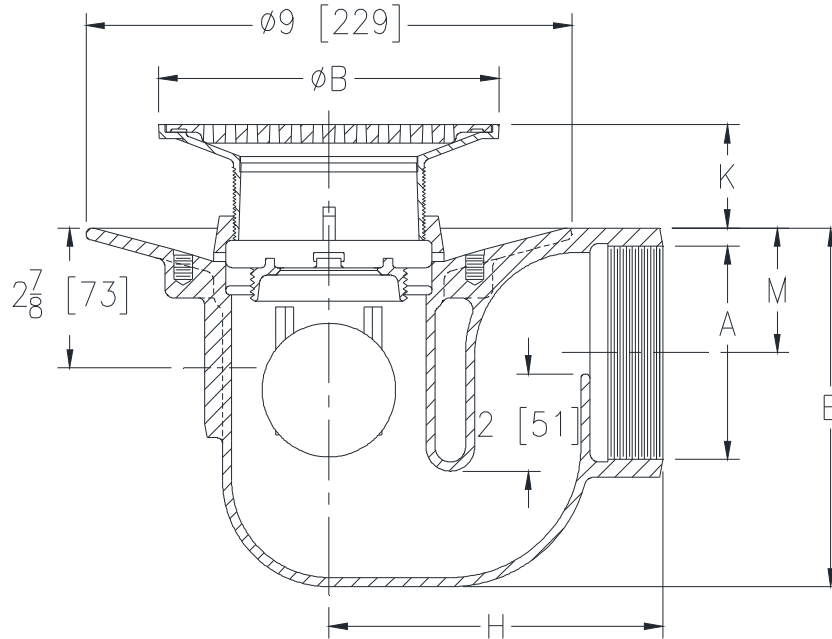
# Z450B-V

DRUM TRAP DRAIN W/ "TYPE B" STRAINER & BALL  
FLOAT TYPE BACKWATER VALVE

SPECIFICATION SHEET

TAG \_\_\_\_\_

Dimensional Data (inches and [ mm ]) are Subject to Manufacturing Tolerances and Change Without Notice



Dimensions In Inches [Millimeter]								Approx. Wt. Lbs. [kg]	Strainer Open Area Sq. In. [cm <sup>2</sup> ]
A- Pipe Size	B- Strainer Diameter	H		K		M			
		IP	NH	Min.	Max.	IP	NH		
2 [51]	5 [127]	6-1/16 [154]	11 [279]	7/8 [22]	2 [51]	1-15/32 [37]	2 [51]	18 [8]	8 [52]
3 [76]		6-7/16 [164]				2-3/32 [53]	2-9/16 [65]		
4 [102]		6-7/8 [175]				2-19/32 [66]	2-19/32 [66]		
2 [51]	6 [152]	6-1/16 [154]	11 [279]	1-1/8 [29]	2-1/4 [57]	1-15/32 [37]	2 [51]	19 [9]	9 [58]
3 [76]		6-7/16 [164]				2-3/32 [53]	2-9/16 [65]		
4 [102]		6-7/8 [175]				2-19/32 [66]	2-19/32 [66]		
2 [51]	8 [203]	6-1/16 [154]	11 [279]	1-1/2 [38]	2-5/8 [67]	1-15/32 [37]	2 [51]	33 [15]	18 [116]
3 [76]		6-7/16 [164]				2-3/32 [53]	2-9/16 [65]		
4 [102]		6-7/8 [175]				2-19/32 [66]	2-19/32 [66]		

**ENGINEERING SPECIFICATION: ZURNZN450B-V**

Drum trap floor and shower drain, Dura-Coated cast iron body with ball float type backwater valve, integral trap, side outlet, seepage pan and adjustable "TYPE B" polished, nickel bronze strainer.

**OPTIONS** (Check/specify appropriate options)

PIPE SIZE	(Specify size/type) OUTLET	'E' BODY HT. DIM.
2, 3 [51, 76]	____ IP Threaded	6-1/2 [165]
4 [120]	____ IP Threaded	7-3/8 [187]
2, 3, 4 [51, 76, 102]	____ NH No-Hub	7-3/8 [187]

**PREFIXES**

- \_\_\_\_ ZB D.C.C.I. Body Assembly w/Polished Bronze Top
- \_\_\_\_ ZN D.C.C.I. Body Assembly w/Polished Nickel Bronze Top\*

**SUFFIXES**

- \_\_\_\_ -C Clamping Collar
- \_\_\_\_ -G Galvanized Cast Iron
- \_\_\_\_ -P Trap Primer Connection (Specify 1/2 [13] or 3/4 [19])
- \_\_\_\_ -PC Protective Cover
- \_\_\_\_ -U 1 - 3 [25 - 76] High Extension Adapter
- \_\_\_\_ -VP Vandal-Proof Secured Top
- \_\_\_\_ -Y Sediment Bucket

\* Regularly furnished unless otherwise specified.