



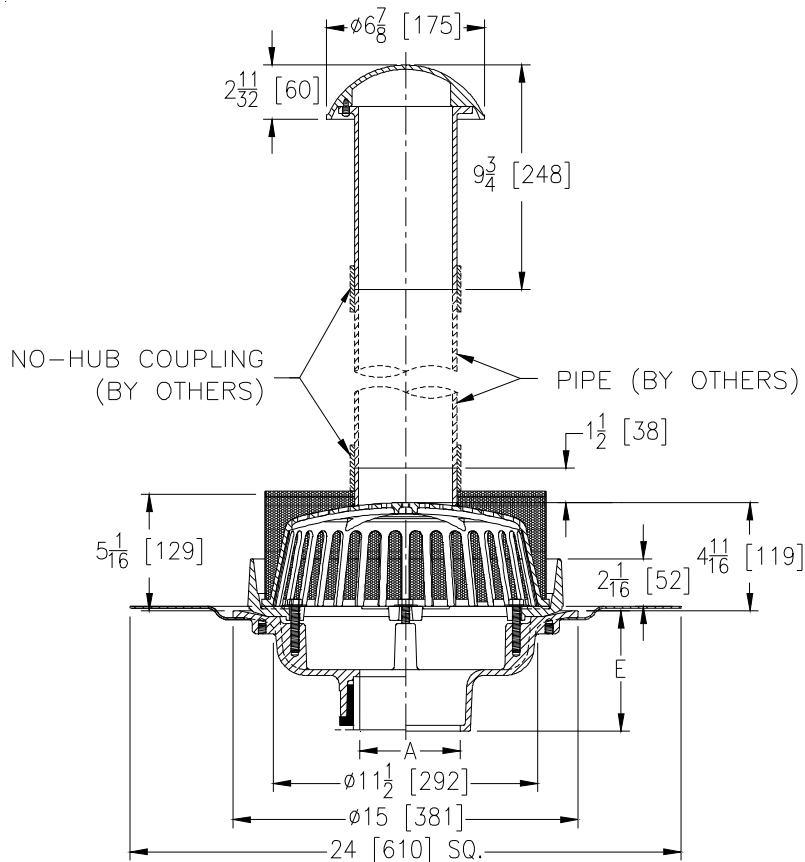
Z100-215

SPECIFICATION SHEET

15 [381] DIAMETER MAIN ROOF DRAIN W/ 2 [51] HIGH EXTERNAL WATER DAM, S.S. MESH SCREEN AND UPPER Z1473 VENT CAP

TAG _____

Dimensional Data (inches and [mm]) are Subject to Manufacturing Tolerances and Change Without Notice



| A Pipe Size In. | Approx. Wt. Lbs. [kg] | Dome Open Area Sq. In. [cm ²] |
|--------------------|-----------------------------|---|
| 2,3,4 [51,76,102] | 55 [25] | 103 [665] |
| 5,6 [127,152] | 51 [23] | |
| 8 [203] | 54 [24] | |

ENGINEERING SPECIFICATION: ZURN Z100-215

15 [381] Diameter roof drain. Dura-Coated cast iron body with 2 [51] high external water dam, cast iron dome with stainless mesh screen and upper Z1473 vent cap.

OPTIONS (Check/specify appropriate options)

PIPE SIZE

2 thru 6,8 [51 thru 152,203]
 2 thru 6,8 [51 thru 152,203]
 2 thru 6,8 [51 thru 152,203]
 2,3,4 [51,76,102]
 6 [152]

(Specify size/type) OUTLET

_____ IC Inside Caulk
 _____ IP Threaded
 _____ NH No-Hub
 _____ NL Neo-Loc
 _____ NL Neo-Loc

E BODY HT. DIM.

5 1/4 [133]
 3 3/4 [95]
 5 1/4 [133]
 4 9/16 [116]
 5 7/16 [112]

PREFIXES

_____ ZA D.C.C.I. Body with Aluminum Dome
 _____ ZC D.C.C.I. Body with Cast Iron Dome*
 _____ ZRB D.C.C.I. Body with Plain Bronze Dome

SUFFIXES

_____ -AC Angular Underdeck Clamp
 _____ -AR Acid Resistant Epoxy Coated
 _____ -C Underdeck Clamp
 _____ -E Static Extension 1 [25] thru 4 [102] (Specify Ht.)
 _____ -G Galvanized Cast Iron
 _____ -GD Galvanized Cast Iron Dome (ZC Only)
 _____ -SC Secondary Clamp Collar

_____ -TC Neo-Loc Test Cap Gasket
 (2 - 4 [51 - 102] NL Bottom Outlet Only)
 _____ -VP Vandal-Proof Secured Top
 _____ -90 90° Threaded Side Outlet Body
 (2 thru 6 [51 or 152])

*REGULARLY FURNISHED UNLESS OTHERWISE SPECIFIED

REV. DATE: 11/9/09 C.N. NO. 110398

DWG. NO. P-15796 PRODUCT NO. Z100-215

ZURN INDUSTRIES, LLC ♦ SPECIFICATION DRAINAGE OPERATION ♦ 1801 Pittsburgh Ave. ♦ Erie, PA 16514

Phone: 814/455-0921 ♦ Fax: 814/454-7929 ♦ World Wide Web: www.zurn.com

In Canada: ZURN INDUSTRIES LIMITED ♦ 3544 Nashua Drive ♦ Mississauga, Ontario L4V1L2 ♦ Phone: 905/405-8272 Fax: 905/405-1292