

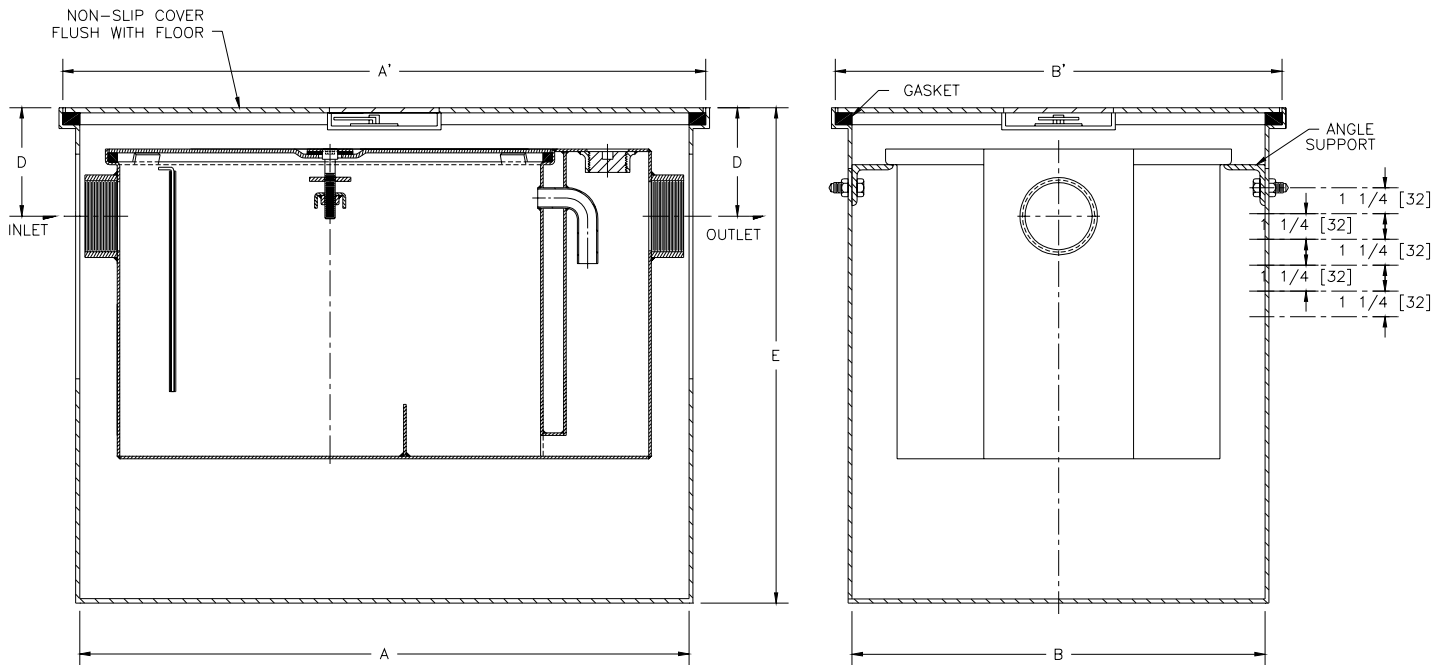


Z1170-RE ADJUSTABLE RECESSING RECEIVER FOR GREASE INTERCEPTOR

SPECIFICATION SHEET

TAG _____

Dimensional Data (inches and [mm]) are Subject to Manufacturing Tolerances and Change Without Notice



Size	Dimensions In Inches [mm]					
	A	A'	B	B'	D	E
100	21 3/8 [543]	23 3/8 [594]	13 3/8 [340]	15 3/8 [391]	4 3/8 [111]	19 [483]
200	22 3/4 [578]	24 3/4 [629]	15 3/8 [391]	17 3/8 [441]	5 [127]	20 1/8 [511]
300	25 [635]	27 [686]	17 1/2 [445]	19 1/2 [495]	5 1/2 [140]	20 3/4 [527]
400	25 3/4 [654]	27 3/4 [705]	20 [508]	22 [559]	6 [152]	22 3/8 [568]
500	29 1/2 [749]	31 1/2 [800]	20 3/4 [527]	22 3/4 [578]	5 1/4 [133]	24 [610]
600	34 [864]	36 [914]	23 1/4 [591]	25 1/4 [641]	6 1/2 [165]	25 3/4 [654]
700	35 [889]	37 [940]	26 [660]	28 [711]	6 1/2 [165]	26 3/4 [679]
800	37 1/4 [946]	39 1/4 [997]	28 [711]	30 [762]	7 1/2 [191]	30 1/2 [775]

ENGINEERING SPECIFICATION: ZURN
Z1170-RE Acid Resistant Epoxy Coated Recessing receiver, enclosed type, equipped with adjustable support brackets and gasketed non-skid cover with recessed and covered lift handle. Complete with Z1170 Grease Interceptor. For interceptor specifications see Z1170 specification sheet.

PREFIXES

— **Z** Acid Resistant Coated Fabricated Steel*

SUFFIXES

- **-K** Anchor flange 1-3/4 [44] down from top and 2 [51] wide. A 3 [76] minimum extension height is required when anchor flange (-K) option is specified.
- **-KC** Anchor flange 1-3/4 [44] down from top and 2 [51] wide with clamp collar. A 3 [76] minimum extension height is required when anchor flange (-KC) option is specified.
- **-T** Cover recessed for tile/terrazzo. A 3 [76] minimum extension height is required. (Specify required recess depth - 1/8 [3], 3/4 [19], or 1-1/4 [32]).

REV. C	DATE: 9/19/03	C.N. NO. 91303
DWG. NO. 59308	PRODUCT NO. Z1170-RE	

*REGULARLY FURNISHED UNLESS OTHERWISE SPECIFIED