



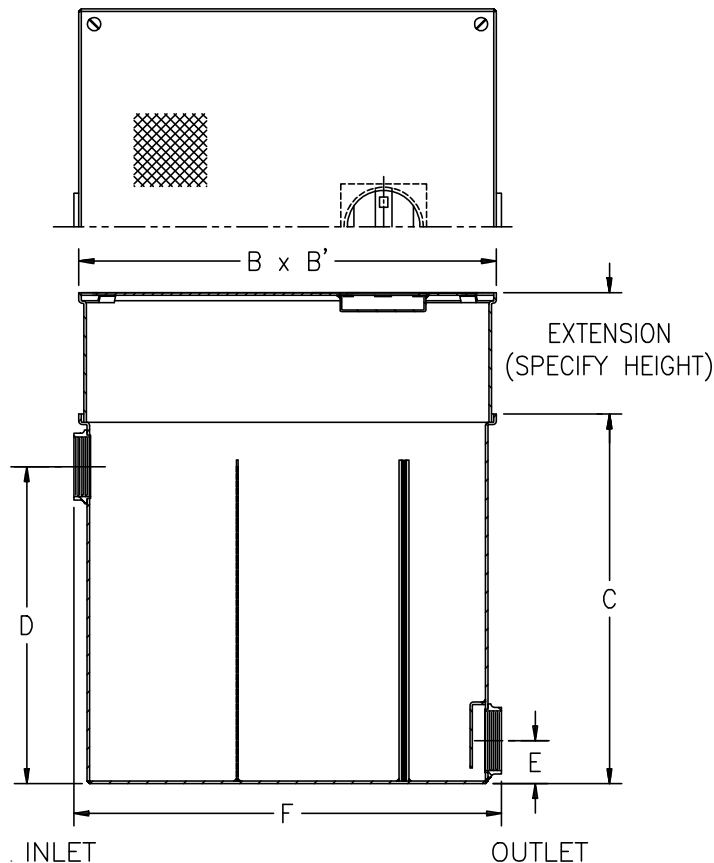
Z-1185-76

LINT INTERCEPTOR WITH EXTENSION

SPECIFICATION SHEET

TAG _____

Dimensional Data (inches and [mm]) are Subject to Manufacturing Tolerances and Change Without Notice



| Size No. of Machines | Inlet/Outlet Size** | Flow Rate G.P.M. [L] | Approx. Wt. Lbs. [kg] | Dimensions In Inches | | | | | |
|----------------------------|------------------------|----------------------------|-----------------------------|----------------------|-----------|--------------|--------------|------------|--------------|
| | | | | B | B' | C | D | E | F |
| 3 | 2 [50] | 30 [113] | 93 [42] | 17 [432] | 17 [432] | 16 1/2 [419] | 13 1/2 [343] | 3 1/4 [82] | 17 1/4 [438] |
| 7 | 3 [75] | 70 [265] | 155 [70] | 25 [635] | 25 [635] | 20 [508] | 17 [432] | 3 1/4 [82] | 25 1/2 [648] |
| 10 | 4 [100] | 100 [378] | 271 [123] | 33 [838] | 33 [838] | 28 [711] | 25 [635] | 4 [102] | 34 [864] |
| 20 | 4 [100] | 200 [756] | 404 [183] | 40 [1016] | 40 [1016] | 35 [889] | 32 [813] | 4 [102] | 41 [1041] |
| 30 | 6 [150] | 300 [1134] | 654 [297] | 45 [1143] | 45 [1143] | 40 [1016] | 36 [914] | 5 [127] | 46 [1168] |
| 40 | 6 [150] | 400 [1512] | 723 [328] | 48 [1219] | 48 [1219] | 43 [1092] | 39 [991] | 5 [127] | 49 [1245] |
| 50 | 6 [150] | 500 [1890] | 911 [414] | 52 [1321] | 52 [1321] | 47 [1194] | 43 [1092] | 5 [127] | 53 [1346] |

ENGINEERING SPECIFICATION: ZURN Z-1185-76 Acid Resistant Coated interior and exterior fabricated steel lint interceptor, with extension, non-skid secured cover, with stainless lint intercepting secondary screen assembly and permanent primary straining baffle. Regularly furnished with high inlet and low outlet.

OPTIONS (Check/specify appropriate options)

PREFIXES

_____ Z- Acid Resistant Coated Fabricated Steel*

SUFFIXES

_____ RS- Stainless Steel Screen Replacement Assembly

*REGULARLY FURNISHED UNLESS OTHERWISE SPECIFIED

REV. DATE: 01/18/96 C.N. NO. 74018

DWG. NO. P-14281 PRODUCT NO. Z-1185-76