

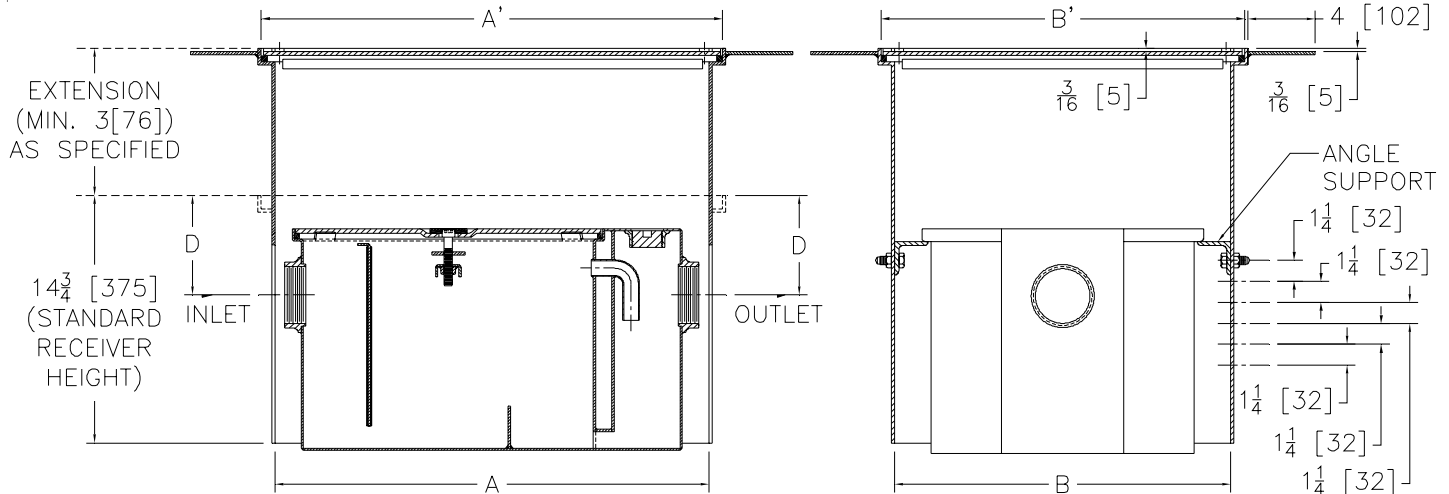


# Z1170-119

## GREASE INTERCEPTOR W/ RECESSING RECEIVER, INTEGRAL EXTENSION & DEX-O-TEX FLANGE

SPECIFICATION SHEET  
TAG \_\_\_\_\_

Dimensional Data (inches and [ mm ]) are Subject to Manufacturing Tolerances and Change Without Notice



Size	Inlet/ Outlet Size**	Flow Rate G.P.M. [L]	Capacity		Approx. Wt. Lbs. [kg]	Dimensions in Inches				
			Water Gal. [L]	Grease Lbs. [kg]		A	A'	B	B'	D
100	2 [51]	4 [15]	3 [11]	8 [4]	102 [46]	19 3/4 [502]	21 3/4 [552]	12 3/4 [324]	14 3/4 [375]	4 1/8 [105]
200		7 [26]	5 [19]	14 [6]	135 [61]	21 3/4 [552]	23 3/4 [603]	15 3/8 [390]	17 3/8 [441]	4 3/8 [111]
300		10 [38]	6 [23]	20 [9]	160 [73]	25 [635]	27 [686]	17 1/2 [444]	19 1/2 [495]	4 7/8 [124]
400	3 [76]	15 [57]	10 [38]	30 [14]	185 [84]	25 3/4 [654]	27 3/4 [705]	20 [508]	22 [559]	5 3/8 [137]
500		20 [76]	16 [60]	40 [18]	210 [95]	29 1/2 [749]	31 1/2 [800]	20 3/4 [527]	22 3/4 [578]	5 3/4 [146]
600		25 [94]	21 [79]	50 [23]	250 [113]	34 [864]	36 [914]	23 1/4 [590]	25 1/4 [641]	5 7/8 [149]
700		35 [132]	30 [113]	70 [32]	285 [129]	35 [889]	37 [940]	26 [660]	28 [711]	5 7/8 [149]
800		50 [189]	40 [151]	100 [45]	325 [148]	37 1/4 [946]	39 1/4 [997]	28 [711]	30 [762]	6 7/8 [175]

**ENGINEERING SPECIFICATION: ZURNZ1170-119**

Acid Resistant Coated interior and exterior fabricated steel grease interceptor. PDI, rated at \_\_\_\_ GPM and \_\_\_\_ Lbs. grease capacity, with internal air relief by-pass, bronze cleanout plug and visible double wall trap seal with removable combination pressure equalizing/flow diffusing baffle, gasketed recessed cover for 3/16[5] tile/terrazzo and DEX-O-TEX flange. Complete with acid resistant coated interior and exterior fabricated steel integral extension section (Specify 'C' Dim. required). Regularly furnished with a high inlet and outlet connection. Note: Location of outlet from bottom of interceptor cannot be changed.

**PREFIXES**

\_\_\_\_ Z Acid Resistant Coated Fabricated Steel\*

\*\* Inlet and outlet sizes shown indicate standard operating sizes and flow control setting. Size #300 will have 3 [76] connections reduced to 2 [51] and sizes #600 thru #800 will have 4 [102] connections reduced to 3 [76] as standard. If changed, flow control must be adjusted accordingly.

REV.	DATE: 10/30/06	C.N. NO. 95794
DWG. NO. P-15349	PRODUCT NO. Z1170-119	

\*REGULARLY FURNISHED UNLESS OTHERWISE SPECIFIED