

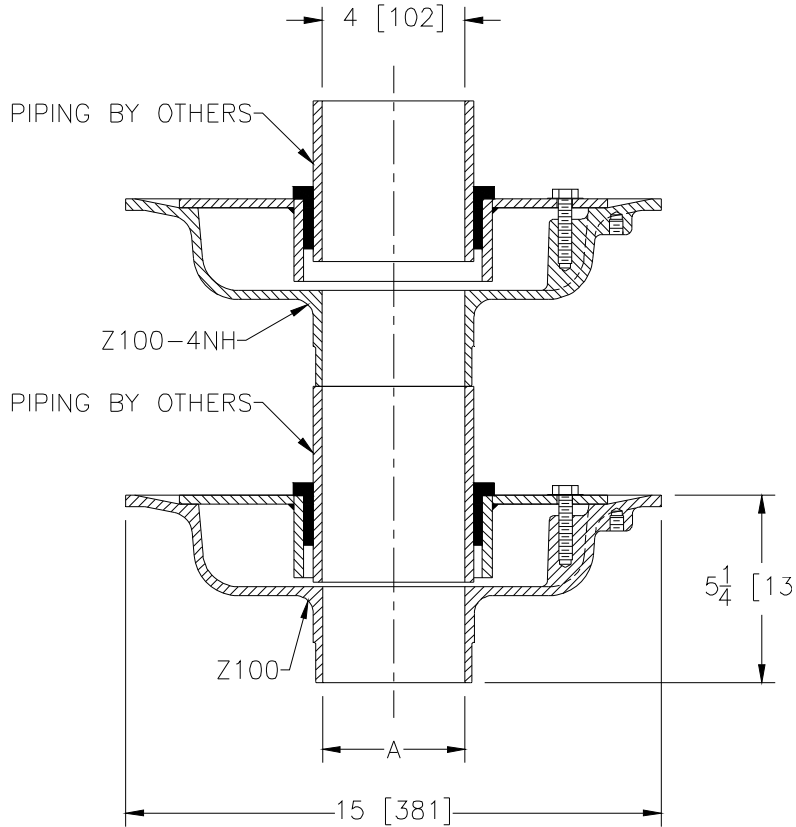


Z625-89 ISOLATION DECK DRAIN

SPECIFICATION SHEET

TAG _____

Dimensional Data (inches and [mm]) are Subject to Manufacturing Tolerances and Change Without Notice



A Pipe Size	Approx. Wt. Lbs. [kg]
3-4 [76-102]	55 [25]

ENGINEERING SPECIFICATION: ZURN Z625-89 Adjustable isolation deck drain, Dura-Coated cast iron upper and lower bodies, upper and lower clamp collars, neoprene flex gasket.

OPTIONS (Check/specify appropriate options)

PIPE SIZE
3 thru 4 [76 thru 102]

(Specify size/type) **OUTLET**
___ NH No-Hub

'E' BODY HT. DIM.
3 7/8 [98]

PREFIXES

___ Z D.C.C.I Upper and Lower Bodies

SUFFIXES

- ___ -AR Acid Resisting Epoxy Coated Cast Iron
- ___ -G Galvanized Cast Iron
- ___ -P Trap Primer Connection (Specify 1/2 [13] or 3/4 [19], Lower Body only)

REV. A	DATE: 06/24/10	C.N. NO. 111304
DWG. NO. P-15395		PRODUCT NO. Z625-89

*REGULARLY FURNISHED UNLESS OTHERWISE SPECIFIED