

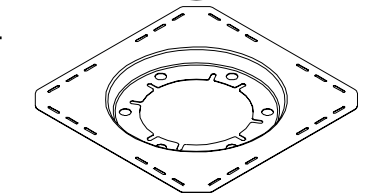
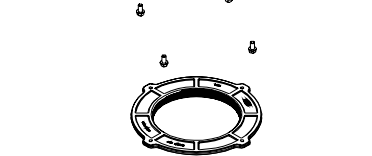
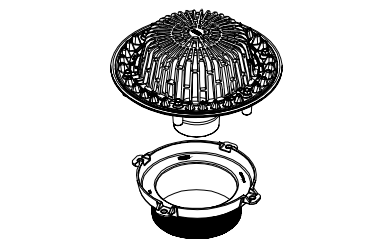
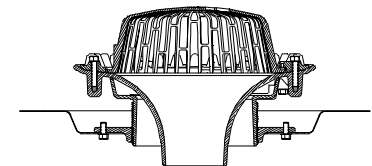
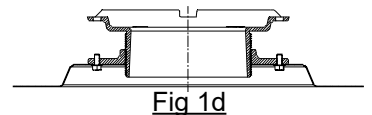
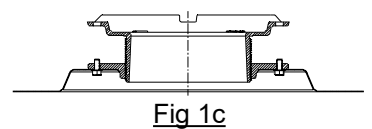
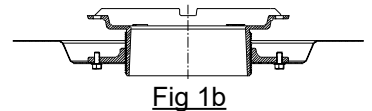
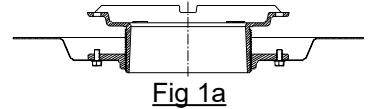


Z100F-DR FLOFORCE™ TOP-SET® DRAIN RISER INSTALLATION INSTRUCTIONS

Design and Dimensional Data (inches and [mm]) are Subject to Manufacturing Tolerances and Change Without Notice

The Zurn Top-Set Drain Riser is a patented roof drain feature that allows the height extension of a roof drain installation to be achieved outside of the waterway. It is important to recognize and identify the proper assembly height needed, prior to the installation of the drain.

1. **IMPORTANT:** The Drain Riser option allows for an extension height range from 1-7/16 to 7-1/2 [37 to 191] above the roof deck. This overall range is achieved through various assembly combinations of the components. Select the extension height range required prior to assembly and installation of the drain components.
 - a. Configuration of Deck Plate depressed downward and Extension Collar threads facing downward yields a range of 1 7/16 to 4 [37 to 102]. (Fig 1a)
 - b. Configuration of Deck Plate depressed downward and Extension Collar threads facing upward yields a range of 2 to 4 5/8 [51 to 117]. (Fig 1b)
 - c. Configuration of Deck Plate raised upward and Extension Collar threads facing downward yields a range of 4 7/16 to 7 [113 to 178]. (Fig 1c)
 - d. Configuration of Deck Plate raised upward and Extension Collar threads facing upwards yields a range of 5 to 7 1/2 [127 to 191]. (Fig 1d)
2. Create a square opening in the roof deck to receive the drain assembly. Opening size should be 18 x 18 [457 x 457] min for 2 thru 4 [51 thru 102] outlets and 22 x 22 [559 x 559] min for 6 thru 8 [152 thru 203] outlets.
3. From the selected configuration of Step 1, attach the deck plate to the drain riser collar using the hardware provided, and tighten bolts securely.
4. Place the assembly into the precut opening in the roof, aligning the outer deck plate attachment slots in the appropriate positions.
5. Fasten the deck plate assembly to the roof deck with self-tapping screws (provided by others).
6. Attach the threaded extension sleeve to the drain body using hardware provided.
7. Thread the extension sleeve into the extension collar and set at required height.
8. Install roof insulation (as required) and secure a waterproofing membrane to the roof drain body with the clamping collar.
 - a. Apply the water proofing membrane fully over the roof drain.
 - b. Locate the clamping collar tappings in the top surface of the drain body and create bolt clearance holes in the membrane at corresponding locations.
 - c. Using appropriate manufacturer's sealant seal the membrane to the drain body per manufacturer's instructions.
 - d. Align the clamping collar bolt holes with the drain body tappings and set the collar onto the membrane and body.
 - e. Insert clamping collar hardware through the holes and hand tighten down in a star pattern progressively.
 - f. If reinforced membranes are used or the membrane is suspended above drain, and hardware is used to pull membrane down to drain body, hardware must be tightened in a progressive cross-body pattern (See Form #RD139). **Warning: Forcing membrane down to drain body using only two opposite bolts can break the clamping collar and is not covered under product warranty.**
 - g. Tighten the bolts securely in a progressive cross-body pattern to 25 ft-lbs maximum torque. **Warning: Over-torque of the bolts can cause damage to the clamping collar and/or drain body, and compromise sealing of the membrane. DO NOT use an impact driver to tighten down the hardware.**
9. Cut the membrane as per the roof membrane manufacturer's requirements in the center of the clamping collar. Continue to cut outward until the precast cutting edge in the drain body is located. Once precast edge is found, cut out circular section of membrane by following the cutting edge. **Warning: Failure to properly cut the membrane along the prescribed cut edge of the drain body may result in decreased flow performance of the roof drain.**
10. Align the dome inside of the clamping collar and rotate clockwise until dome is engaged and secured.



Note: For additional drain installation instructions, reference Zurn document Form #RD139.

⚠ WARNING: Cancer and Reproductive Harm - www.P65Warnings.ca.gov

⚠ ADVERTENCIA: Cáncer y daño reproductivo - www.P65Warnings.ca.gov

⚠ AVERTISSEMENT: Cancer et effets néfastes sur la reproduction - www.P65Warnings.ca.gov

Zurn Industries, LLC | Specification Drainage Operation
1801 Pittsburgh Avenue, Erie, PA 16502, Ph. 855.663.9876

In Canada | Zurn Industries Limited
7900 Goreway Drive, Unit 10, Brampton, Ontario L6T 5W6, Ph. 877.892.5216

www.zurn.com

Rev. A
Date: 05/05/2022
C.N. No. 144476
Form No. RD141

Page 1 of 1