

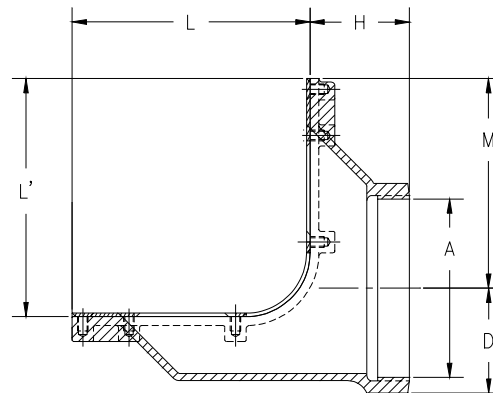
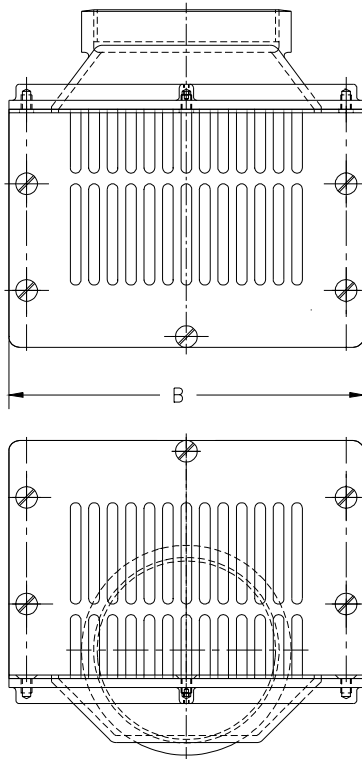


# Z-187-85

## 8" X 12" [203 X 305] SCUPPER DRAIN WITH SCREW HOLES FOR SECURING

TAG \_\_\_\_\_

Dimensional Data (inches and [ mm ]) are Subject to Manufacturing Tolerances and Change Without Notice



A-Pipe Size Inches	Dimensions In Inches [mm]						Approx. Wt. Lbs. [kg]	Grate Open Area Sq. In. [cm <sup>2</sup> ]
	B	D	H	L	L'	M		
4 [100]	12 1/2 [318]	2 1/2 [64]	3 1/2 [89]	8 3/8 [213]	8 3/8 [213]	8 1/2 [216]	50.1 [323]	
5 [125]		3 1/16 [78]				7 7/8 [200]		
6 [150]		3 5/8 [92]				7 3/8 [187]		
8 [200]		4 5/8 [117]				6 3/8 [162]		

**ENGINEERING SPECIFICATION:** ZURN Z-187-85 8 x 12 [203 x 305] Scupper drain, Dura-Coated cast iron body with reversible back or bottom outlet and 90° flat grate with screw holes for securing.

**OPTIONS** (Check/specify appropriate options)

**PIPE SIZE**

4, 5, 6, 8 [100, 125, 150, 200]

(Specify size/type) **OUTLET**

\_\_\_ IP Threaded

**'E' BODY HT. DIM.**

See Chart

**PREFIXES**

- \_\_\_ Z- D.C.C.I. Body with Grate\*
- \_\_\_ ZB- D.C.C.I. Body with Polished Bronze Grate
- \_\_\_ ZN- D.C.C.I. Body with Polished Nickel Bronze Grate

**SUFFIXES**

- \_\_\_ -G Galvanized Cast Iron
- \_\_\_ -TS Secured Top With Slotted Screws
- \_\_\_ -VP Vandal Proof Secured Top

\*REGULARLY FURNISHED UNLESS OTHERWISE SPECIFIED

REV. A	DATE: 1/3/02	C.N. NO. 88234
DWG. NO. P-14579		PRODUCT NO. Z-187-85