



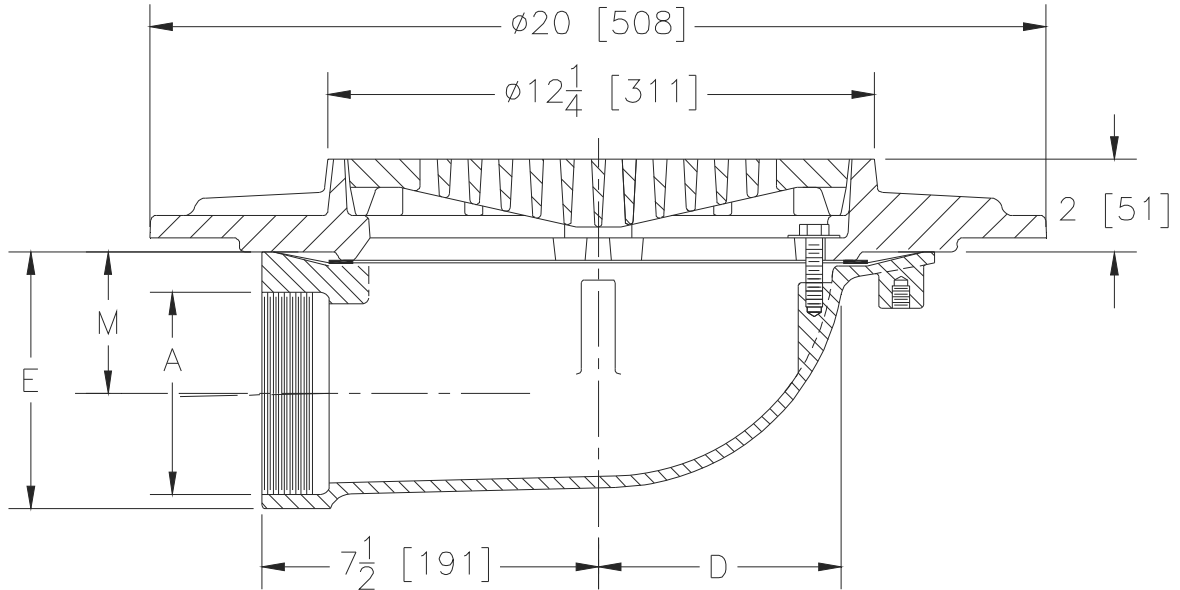
Z534-91

SPECIFICATION SHEET

12 [305] DIAMETER HEAVY-DUTY LATERAL PARKING DECK DRAIN WITH SUPPORT FLANGE

TAG _____

Dimensional Data (inches and [mm]) are Subject to Manufacturing Tolerances and Change Without Notice



Dimensions In Inches [mm]			Approx Wt. Lbs. [kg]	Grate Open Area Sq. In. [cm ²]
A Pipe Size	D	M		
2 [51]	5-1/2 [140]	4-1/4 [108]	78 [35]	30 [194]
3 [76]		3-11/16 [94]		
4 [102]		3-3/16 [81]		
5 [127]	5-7/8 [149]	4-13/16 [122]	78 [35]	30 [194]
6 [152]		4-1/4 [108]		

ENGINEERING SPECIFICATION: ZURN Z534-91 12 [305] Diameter Parking Deck Drain, Dura-Coated cast iron lateral body with side outlet, heavy-duty gasketed drain support flange, with heavy-duty slotted grate.

OPTIONS (Check/specify appropriate options)

PIPE SIZE

2 thru 4 [51 thru 102]
6 [152]

(Specify size/type) **OUTLET**

_____ IP Threaded
_____ IP Threaded

E BODY HT. DIM.

5-3/4 [146]
7-7/8 [200]

PREFIXES

- _____ Z D.C.C.I. Body and Top*
- _____ ZB D.C.C.I. Body with Polished Bronze Top (Add 3/16 [5] to 2 [51] Dim and 3/4 [19] To 12-1/4 [311] Dim.)
- _____ ZN D.C.C.I. Body with Polished Nickel Bronze Top (Add 3/16 [5] to 2 [51] Dim and 3/4 [19] To 12-1/4 [311] Dim.)

SUFFIXES

- _____ -C Underdeck Clamp
- _____ -G Galvanized Cast Iron
- _____ -HP Heel-Proof Grate
- _____ -TS Top Secured with Slotted Screws
- _____ -VP Vandal-Proof Secured Top
- _____ -Y Sediment Bucket

REV.	DATE: 08/22/13	C.N. NO. 129837
PROD./DWG. NO. Z534-91		

*REGULARLY FURNISHED UNLESS OTHERWISE SPECIFIED